



huperNet User Guide

Introduction

huperNet is a remote access service designed exclusively for HuperLab surveillance product use, including huperDVR /huperVision series. It enables secure remote access to the DVR/NVR sites anytime anywhere there's an Internet connection.

huperNet requires no additional configurations to work with the existing firewalls. Assign a specific HPN domain to the DVR/NVR sites, log in to huperNet, and then you will be able to easily remote monitor the DVR/NVR sites via Web browser and HuperLab Central Management Station (huperRemote and huperCenter) in seconds. With huperNet, installers can shorten their learning curve for network configuration, and remote access to the DVR/NVR sites for trouble shooting, thus increase the operation efficiency, and greatly reduce the service costs. It's easy, secure and cost saving.

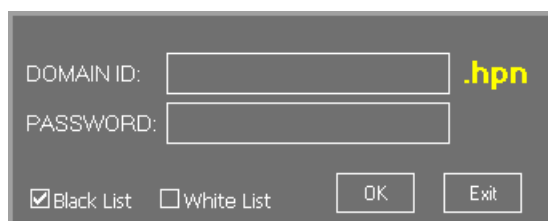
Installation

huperNet.exe is a executable file and an automatic installation file. Double-click it will automatically setup the related environment (include a virtual network adaptor and its firewall settings) for the first time. huperNet will automatically enable the Windows Firewall and open the required ports : 80 / 18082 / 18083 / 18000 / 18080 / 5900

After installation, it will pop-up an empty login window.

Registration / Login

To start huperNet registration/login procedure, double-click huperNet.exe program icon. If the computer didn't login to huperNet before, it will pop-up a blank huperNet login window as below.

A screenshot of a blank huperNet login window. It has a dark gray background. At the top right, there is a yellow ".hpn" logo. Below the logo, there are two text input fields: "DOMAIN ID:" and "PASSWORD:". At the bottom left, there are two checkboxes: "Black List" (checked) and "White List" (unchecked). At the bottom right, there are two buttons: "OK" and "Exit".

Input the **DOMAIN ID & PASSWORD** combination in this window then press OK to login huperNet. Press Exit to close huperNet program. If this combination doesn't exist in the huperNet server database, it will register this combination as a huperNet client first and then login to huperNet.

If the computer has login to huperNet before, it will pop-up a huperNet login window with ID/PW combination of latest connection.

A screenshot of a huperNet login window with pre-filled information. The "DOMAIN ID:" field contains the text "wattlai" and the "PASSWORD:" field contains seven asterisks "*****". The rest of the window, including the ".hpn" logo, checkboxes, and buttons, is identical to the previous screenshot.

This window will disappear and auto-login to huperNet after 5 seconds with this case. If you move mouse cursor to focus with this login window within 5 seconds, the auto-login process will be terminated. You can change ID/PW combination and click OK to login.

Login Error Messages

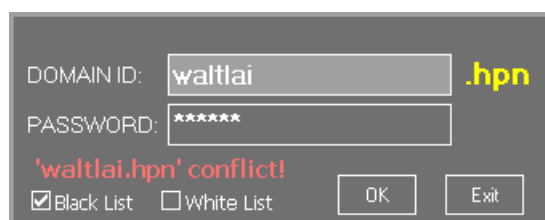
Error Message Input an ID with incorrect password

Please input correct combination.



Conflict Message ID/PW combination has been used by another user

Please input another correct combination or login later.




Note: This message also pops-up if the time period between connections is too short (30 seconds). Please login again a little bit later.

After login, huperNet will automatically minimize to the system tray.



Start up Settings

Right click on the huperNet icon  in the system tray will bring up the function menu as below:



Please see the table below to see program start up related options:

Manual start	Enable this option to run huperNet manually.
Run as service	Enable this option to run huperNet as Windows service. Other huperNet clients can connect this computer without login Windows.
Start with Windows	Enable this option to run huperNet after Windows starting up.

Black List / White List / Friend List

Black List

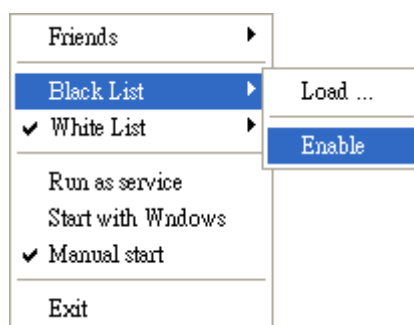
Black List is a list of domain names which huperNet does not allow any connection from specific domain names listed in the Black List file. Enable an empty Black List will allow all the connection from other huperNet clients.

Use one of the following ways to enable Black List:

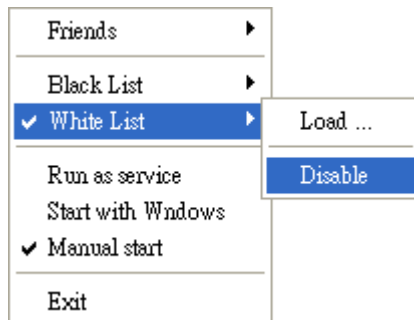
- 1 Check the Black List from the login window



- 2 Select "Enable" sub menu command from the Black List function. The Black List is enabled by Default.

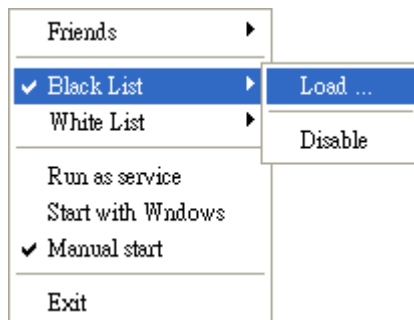


- 3 Select "Disable" sub menu command from the White List function.



Note: When you enable Black List, the White List function will be disabled. Black List & White List functions are exclusive to each other.

Click “Load...” function on the sub menu of Black List. Users will be able to select a file from current system to Import Black List. Please select your Black List file (BlackList.txt) and then press OK button.



White List

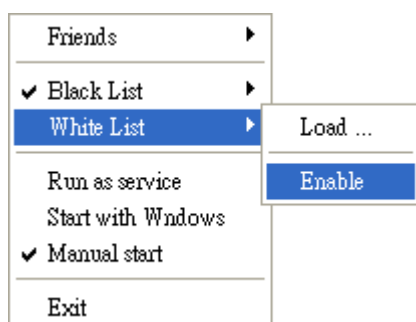
White List is a list of domain names which huperNet only allow connections from specific domain names. Enable an empty White List will allow no connections from any other huperNet clients.

Use one of the following ways to enable White List:

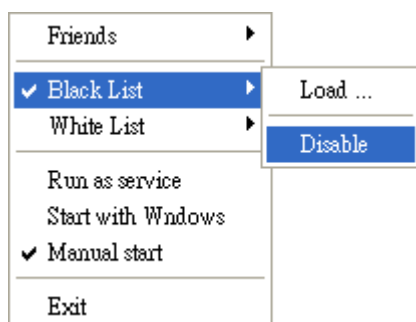
- 1 Check the White List from the login window



- 2 Select "Enable" sub menu command from the White List function.

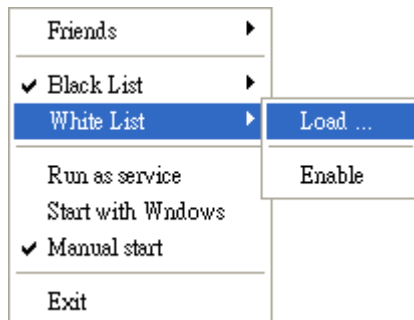


- 3 Select "Disable" sub menu command from the Black List function.



Note: When you disable Black List, the White List function will be enabled. Black List & White List functions are exclusive to each other.

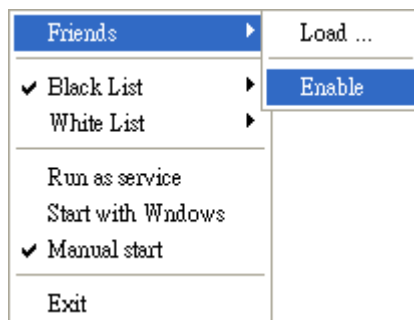
Click “Load...” function on the sub menu of White List. Users will be able to select a file from current system to Import White List. Please select your White List file (WhiteList.txt) and then press OK button.



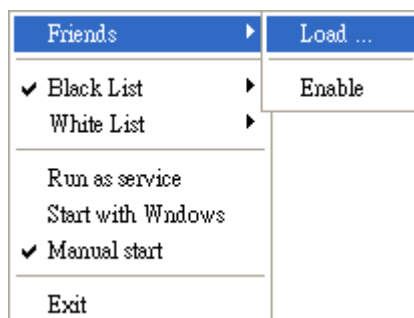
Friend List

Friends List is a List specify which domain names should be build a connection when huperNet starts.

To enable Friend List, select “Enable” sub menu command from the Friends function.



Click “Load...” function on the sub menu of Friends. Users will be able to select a file from current system to Import Friends List. Please select your Friends List file (Friends.txt) and then press OK button. The operation procedure is the same as Black List & White List.



File Format of Black List / White List / Friend List

BlackList.txt, WhiteList.txt, Friends.txt have the same file format:

Text based file with 1 domain name per line

The following is the example of BlackList.txt:

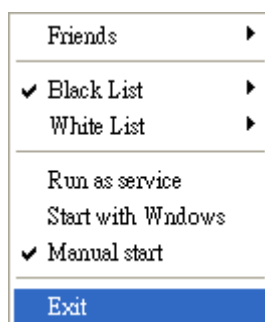
user1.hpn

user2.hpn

user3.hpn

Exit huperNet service

Select the Exit command from the huperNet Menu will exit huperNet service.



Note: The domain name registered on huperNet server will be expired when the client is not login over 1 week. The domain name will be available for registration.

Connection Example

The following steps are the connection example using huperNet:

1. User setups a huperNet client on a huperVision machine with registered domain name "DVR1.hpn".
2. User's laptop PC wants to view the DVR site remotely and also build a huperNet client registered as "tonylin.hpn"
3. When both clients login to huperNet, the client "tonylin.hpn" can use IE browser to view the registered huperVision site "DVR1.hpn" remotely.