
huperRemote



- [Connecting to Remote DVR Sites](#)
- [Monitoring Remote Cameras](#)
- [Recording Surveillance Video](#)
- [The Camera List Panel](#)
- [The PTZ Camera Control Panel](#)
- [The Input I/O Control Panel](#)
- [The Output I/O Control Panel](#)
- [Using Remote Player](#)
- [Using the Scheduler](#)
- [Configuring huperRemote](#)

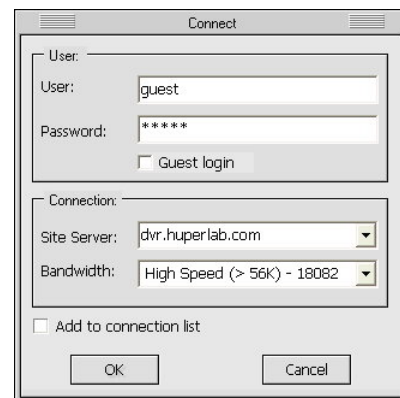
huperRemote

huperRemote provides up to 16 split screens on the user interface for you to simultaneously monitor remote cameras from multiple DVR sites. Each DVR site will have a DVR server computer that is connected to surveillance cameras and other security devices. You need to first specify the URL addresses and the login details of the DVR servers that you would like to connect to.

Connecting to Remote DVR Sites

To add and connect to a remote DVR site:

1. Click  to open the Connect dialog box
2. Enter the DVR site's URL address in the Site Server text box.
3. Clear the Guest login checkbox, then type in the valid User name and Password for connecting to the DVR site.
4. Select Add to connection list to add the DVR site to huperRemote's Camera List Panel, then click OK. huperRemote will then connect to the specified DVR site and display the remote cameras.
5. The DVR site will be added to the Camera List Panel. Click  to open this panel. See the names of different cameras in the DVR site, click on the "+" sign.
6. By default, the site is named with the site name that has been specified in the remote DVR site. To rename it, click on the text and type in the desired name.
7. huperRemote allows you to connect to multiple DVR sites at the same time. Repeat steps 1 to 6 to add more DVR sites.




The 'Connect' dialog box contains the following fields and controls:

- User:**
 - User:
 - Password:
 - ☐ Guest login
- Connection:**
 - Site Server:
 - Bandwidth:
 - ☐ Add to connection list
- Buttons: OK, Cancel



Note: If you want to change the information of a DVR site, select then right-click the DVR site name in the Camera List Panel. The Site Information dialog box will then open where you can make modifications.

Another way of adding DVR sites is to click  in the Camera List Panel. The Add Site/Group dialog box will then be displayed where you can add a new DVR site. This dialog box also allows you to create a group name for grouping existing DVR sites.

To connect and disconnect an existing DVR site:

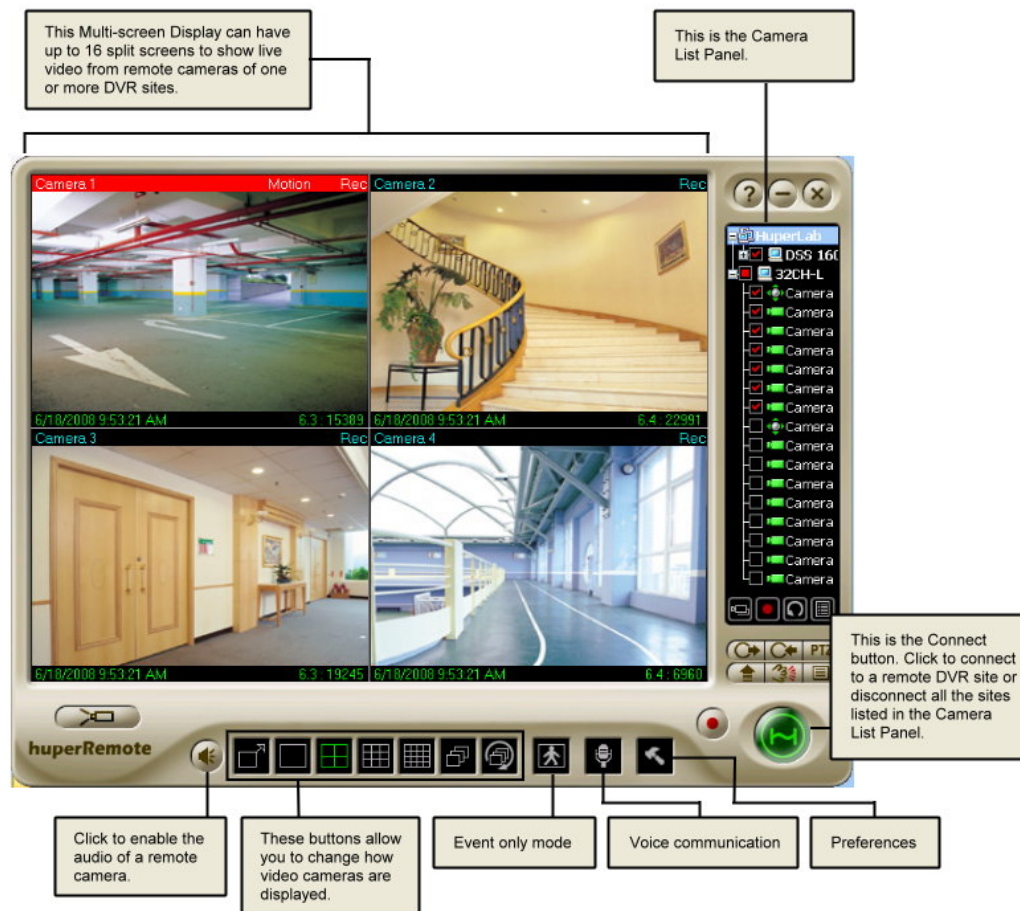
To connect to a DVR site, double-click the site name in the Camera List Panel.
Double-click the site name again to disconnect from the DVR site.

To disconnect all connected DVR sites:

Click . This closes all connections.

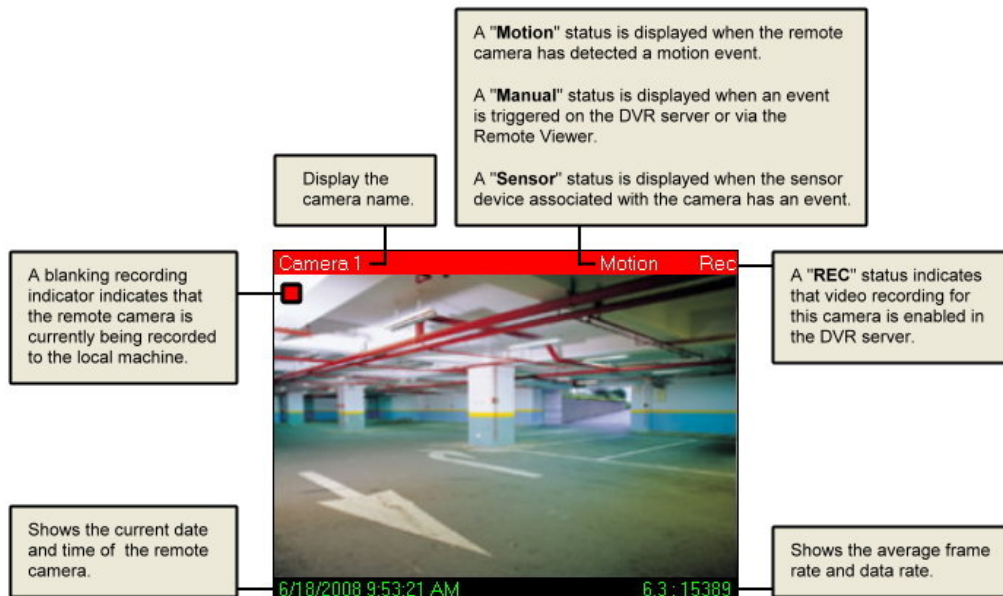
Monitoring Remote Cameras

When huperRemote has successfully established connection with the DVR site(s) that you added to the Camera List Panel, you will be able to see real-time video from the remote cameras on the site(s).



Split Screens

Split screens show live video from the video cameras that are installed in the monitored site or sites. On the split screens, the video camera number, current date and time, etc. can be displayed. If video recording for a certain camera is enabled on the DVR server, a "REC" indicator will appear at the upper right corner of the corresponding screen. When you have initiated video recording locally on your computer, you will see a red blinking indicator on the split-screen window.



Note: Information displayed on split screens can be enabled or disabled in the Preferences dialog box: Caption tab.

Changing Split Screen Position

Drag a split screen and drop it to another split screen to exchange their positions.

Maximizing Split Screen Size

If there are 4, 9, or 16 split screens displayed, double-click a split screen to enlarge its size and temporarily cover its three neighboring screens. If continue to double-click, the split screen will be enlarged to the full window size.

Right-click on the split screen to restore it back to the previous size. When you continue to right-click on the split screen, it will return to its original size.

Split Screen Controls

Use these buttons to change how split screens are displayed on the program screen.



Toggles between Full-screen and Normal display modes.



Displays a split screen in full window size.



Splits the Multi-screen Display into 4 split screens.



Splits the Multi-screen Display into 9 split screens.



Splits the Multi-screen Display into 16 split screens.





If there are more remote cameras from other DVR sites that cannot be fit within the program screen, click this button to switch the display to the next group of cameras.



If there are more remote cameras from other DVR sites that cannot be fit within the program screen, click this button to loop the display of the cameras. After an elapsed time, the window screen will automatically switch to the next group of cameras or sites.

Displaying Cameras with Detected Events Only


Click  to display only the remote cameras that have been detected with events. The split-screen display of the other cameras will temporarily be turned off. In this mode, only detected events will be recorded if video recording is enabled.

To switch back and display all cameras, click  again.

Note: In the Preferences dialog box: Alarm tab, you can set up huperRemote to sound an alarm in your computer when there are detected events. (See "Configuring huperRemote" for details).

Enabling Audio from Remote Cameras

In case you see abnormal activities while monitoring a remote camera, you can enable the audio from the camera and listen to it through your computer speakers.

To do so, first click the split screen that displays the remote camera, then click . Click this button again to turn off the audio.

Voice Communication with a DVR Server

If the DVR server on the DVR site is enabled to accept two-way communication requests from remote client computers that are running huperRemote, you will be able to initiate voice communication with the person who is operating the DVR server.

Simply click  to initiate voice communication.

Note: You can specify which sound card to use for audio input and make adjustments to the sound volume in the Preferences dialog box: Voice Communication tab.

Remote Camera Controls

Use these buttons to have access to the different DVR sites and their respective remote cameras, and to control how video from these cameras are displayed on the huperRemote program window.



Click to change to the Output I/O Control Panel.



Click to change to the Input I/O Control Panel.



Click to change to the PTZ Camera Control Panel.



Increases the display frame rate of a selected camera. If your network connection bandwidth is limited, it may be helpful to increase the frame rate of the selected camera.




Triggers a manual event to a remote camera.



Expands the Camera List Panel. More button controls in the Camera List Panel will then be displayed. Click again to retract and change the panel back to its original size.

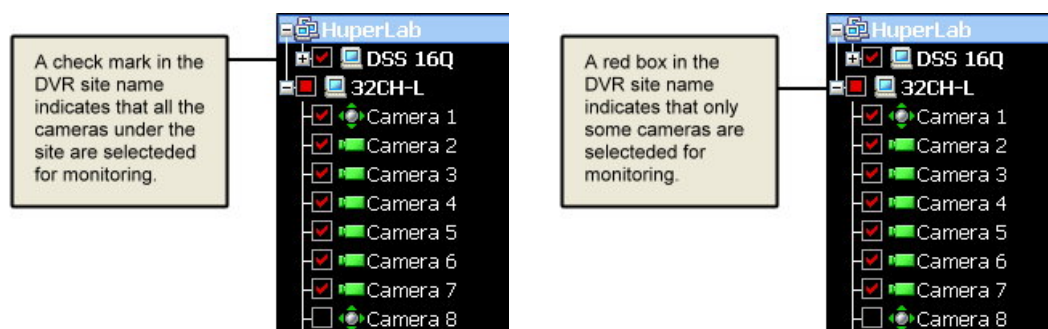
Triggering Manual Events to Remote Cameras

If you see abnormal activities on one of the remote cameras, you can manually trigger an event to that camera. To do so, first click the split screen that displays the remote camera. Then click  to trigger a manual event to the camera. This allows the abnormal activities to be logged and/or digitally recorded.


Note: The "Manual trigger" option of the remote camera must be enabled first at the DVR server.

Recording Surveillance Video


After huperRemote has connected to the DVR sites that you specified, the remote cameras on each site are, by default, all selected for monitoring only. You can record video from all cameras, or choose certain cameras to record video from.



To record video from all remote cameras:

Click . Surveillance video from all remote cameras of the connected DVR sites will be recorded to your local hard drive. Click this button again to stop the recording.



To record video from selected cameras only:

1. Click a camera on the split screen to select it.
2. In the Camera List Panel, click  to start the recording. Click this button again to stop the recording.

Note: In the Preferences dialog box: Storage tab, you can delete old video recordings, and also specify when you want hard disk space to be recycled to free up disk space for saving new recordings. (See "Configuring huperRemote" for details).

The Camera List Panel

The Camera List Panel lists the DVR sites and customized camera groups that you can connect to. At the bottom of the panel are button controls for adding DVR sites or camera groups, connecting/disconnecting selected cameras, video recording, and more.

To expand the Camera List Panel, click . To retract and change it back to the normal panel size. Click  again.



Expanded Camera List Panel



Normal-size Camera List Panel

Panel Controls

At the bottom of the Camera List Panel are two sets of button controls:



Allows you to connect to the selected remote cameras (that is, the cameras with check marks in the Camera List Panel).



Starts recording surveillance video from the selected cameras of a DVR site onto your local hard drive. Click again to stop recording.



Click to refresh the camera list of a selected DVR site.



Opens the Scheduler where you can create schedules for recording surveillance video. (See “Using the Scheduler” for details).



Click to add a new DVR site or group to the list.



Click to remove a DVR site or group.



Click to clear the entire Camera List Panel.

Panel Indicators



Description name of DVR site



Group



CCTV camera



PTZ camera



Indicates that the remote camera is selected. A check mark that appears on a DVR site name indicates that all cameras under it are selected.



Indicates that only some cameras in a DVR site are selected.



Grouping DVR Sites or Remote Cameras

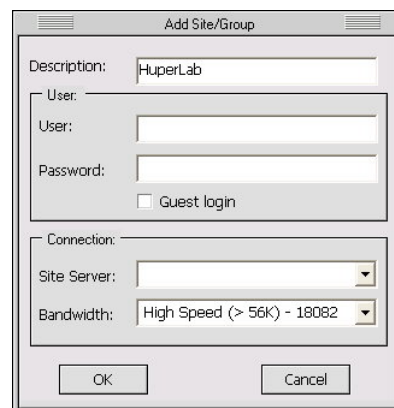
You can create a group name to combine certain DVR sites into the same group.

If you only need to monitor certain cameras from each site, you can also create a group name to combine these cameras under the same group. This allows huperRemote to connect only to the required cameras instead of all the cameras on each site.

To create a group:

1. Click **+** to open the Add Site/Group dialog box.
2. Enter a group name in the Description text box, then click OK.

The new group name will be added to the first entry in the Camera List Panel.



3. You can add a whole DVR site or only selected cameras into the group:
 - To add a whole DVR site, first make sure that there is a check mark in its check box (which means that all cameras under this site are selected). If there is no check mark, click the check box. Then, drag and drop the DVR site into the group.
 - To add only certain cameras of a site to the group, first select the desired cameras. The check box on the DVR site will then be marked with a red box. Now drag and drop the DVR site into the group.
 - If you want to add only a single camera from a site into the group, select that camera then drag and drop it into the group.
4. Repeat step 3 to add more DVR sites or cameras into the group.



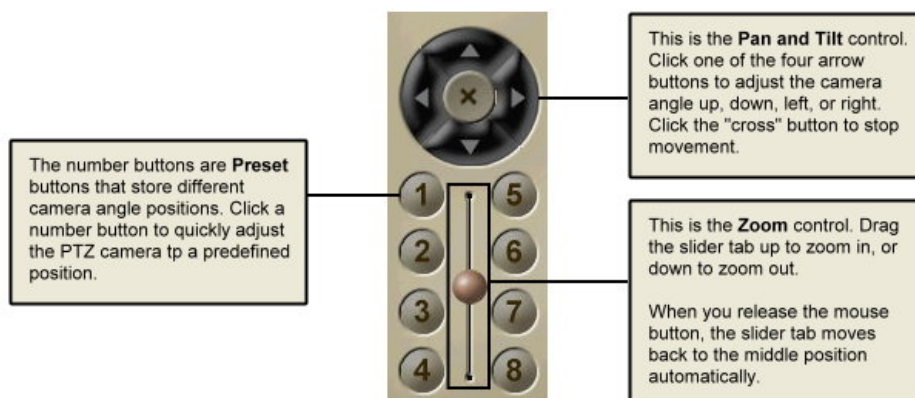
Group of DVR sites



Group of cameras from multiple sites

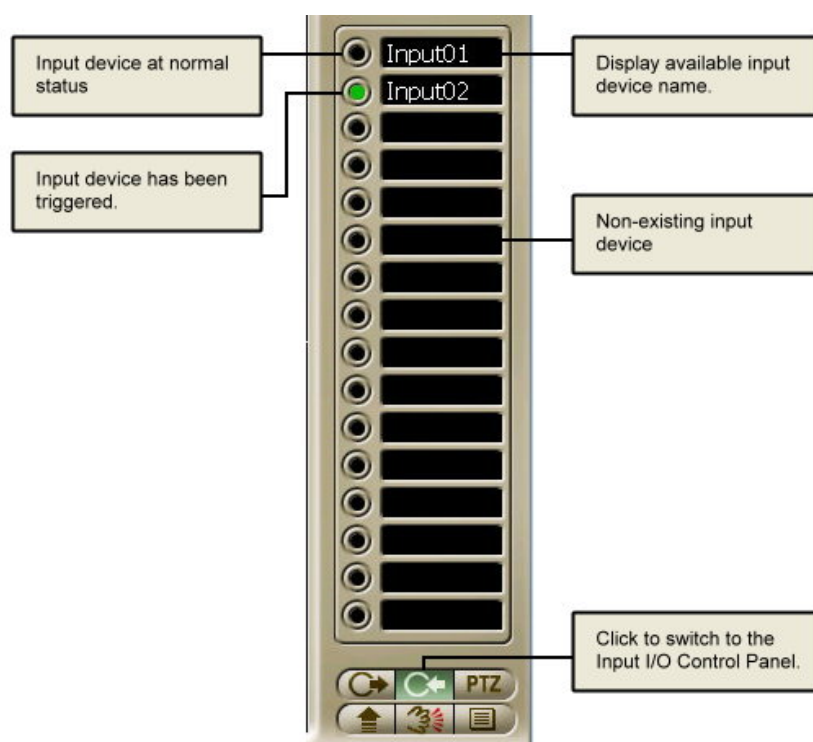
The PTZ Camera Control Panel

If there are PTZ cameras in any of the DVR sites, you can use the PTZ Camera Control Panel to zoom in or out and pan around the monitored areas. Click **PTZ** to open the PTZ Camera Control Panel.




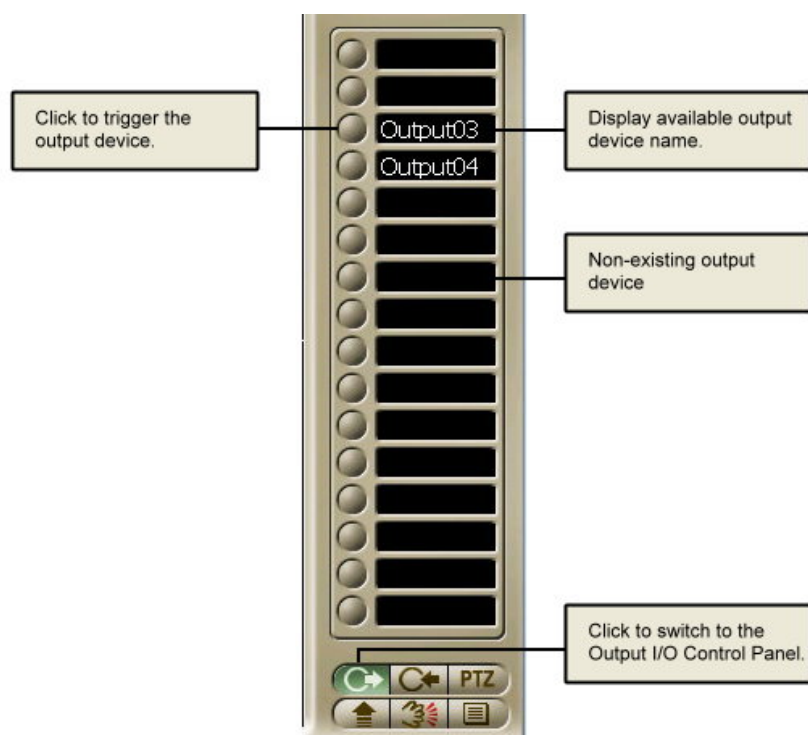
The Input I/O Control Panel

If there are input I/O devices connected to the DVR sites, you can use the Input I/O Control Panel to check the status of input devices. Click **C+** to open the Input I/O Control Panel.




The Output I/O Control Panel

If there are output I/O devices connected to the DVR sites, you can use the Output I/O Control Panel to check the status of output devices. Click  to open the Output I/O Control Panel.



Using Remote Player

huperRemote's Remote Player lets you retrieve and view surveillance videos that have been digitally recorded by a DVR server. You can play back the recordings directly from the server over the Web, or you can download them first to your hard drive and play them locally on your computer. Surveillance video that you recorded locally on your computer hard drive can also be played in Remote Player. At most, surveillance video from 16 different video cameras that were recorded at the same time can simultaneously be viewed on-screen.

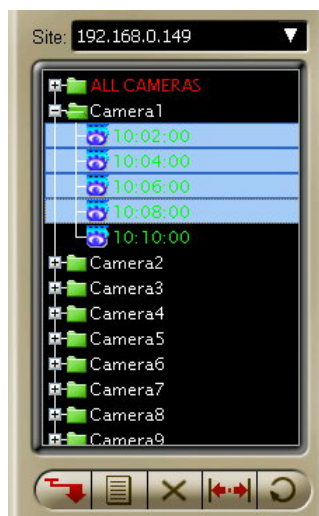
To change to the Remote Player screen, click  in the huperRemote program window.

The User Interface



- 1** Split-screen Window Shows the recordings from selected cameras, or shows a single recording only when a specific recording time from a camera is selected in the Camera List Panel.
- 2** DVR Site List Lists the URL addresses of remote DVR sites from which history records of video recordings can be retrieved.
- 3** Camera List Panel Lists the names of cameras in the currently selected DVR site. Under each camera, history records are listed by time. (See the next section for details).
- 4** Calendar Allows you to select the desired date of surveillance recording.
- 5** Play / Pause Click to start/pause the playback.
- 6** Navigation Panel Provides playback controls.
- 7** Audio Click to enable/disable audio during playback.
- 8** Preferences Click to define settings in the Preferences dialog box.
- 9** Back to huperRemote Click to change back to the huperRemote screen.

The Camera List Panel



The Camera List Panel lists the names of remote cameras from a connected DVR site and displays the history records of the video recordings of these cameras. History records of a chosen date of recording will be displayed under each camera.

Panel Controls



To download certain surveillance recordings for local playback from your hard drive, first choose the desired cameras and recording times in the Camera List Panel then click this button.



Opens a menu where you can choose the type of history records to display in the Camera List Panel.



Deletes selected history records from the Camera List Panel. If local history records are selected in the list, the video files will also be deleted from the hard drive.

While in the process of downloading video recordings, you can click this button to cancel the download.

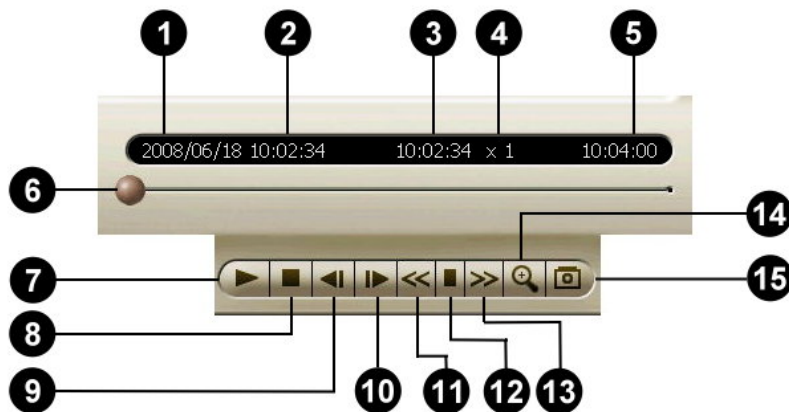


Click to define the desired range of history records to display in the Camera List Panel.



Click to refresh the history records in the Camera List Panel.

The Navigation Panel



- | | |
|----------------------------------|--|
| 1 Date of history records | Shows the calendar date of the history records that are listed in the Camera List Panel. |
| 2 Start time | Shows the start time of the selected record. |
| 3 Current timecode | Shows the timecode of the current video frame. |
| 4 Current display speed | Shows the currently used playback speed. |
| 5 End time | Shows the end time of the selected record. |
| 6 Jog Bar | Allows you to jump directly to any part of the recorded video. Drag the slider tab to the desired part of the recorded video. |
| 7 Play / Pause | Starts/Pauses the playback. |
| 8 Stop | Cancels the playback and moves to the starting frame. |
| 9 Previous Frame | Moves to the previous video frame. (Available for both single and multiple video recordings) |
| 10 Next Frame | Moves to the next video frame. (Available for both single and multiple video recordings) |
| 11 Decrease display speed | Slows down video playback. Click once to play the recorded video at half (1/2 x) the normal speed. Click again to play the video at a quarter (1/4 x) of the normal speed. The slowest speed is 1/8 x. |

- | | | |
|-----------|------------------------|---|
| 12 | Normal display speed | Plays the recorded video at its original speed. |
| 13 | Increase display speed | Increases the playback speed of the video. Click once to double (2 x) the playback speed. Click again to quadruple (4 x) the playback speed. The maximum speed is 16 x. |
| 14 | Zoom in/out | <p>When playing video recordings, you can change the zoom ratio of the video by clicking this button.</p> <p>To zoom in a video, first click the split screen that displays the video, then click this button. Click this button again to zoom out.</p> |
| 15 | Snapshot | <p>Click this button to capture the current video frame and save it as a JPEG or BMP file.</p> <p>To capture the current frame from a video, first click the split screen that displays the video, then click this button. This opens the Snapshot dialog box where you can enhance the image first before saving, printing, or sending it out by e-mail.</p> |

Viewing Recorded Video

To search for recorded surveillance videos and play them, there are four major steps that you need to do:

1. First, connect to the DVR server where the recordings are stored.
 2. Choose the date of recording.
 3. Specify the type of history records to access, then search and retrieve the history records.
 4. If the recordings are stored in the DVR server, stream the videos from the server, or download them first for local playback from your hard drive.
- Whereas if the recordings are locally stored in your computer, play back the videos from your hard drive.

The succeeding sections explain each of these steps in detail.

Connecting to a DVR Site



The DVR Site List keeps track of the URL addresses of DVR servers that you added to huperRemote. Select the URL address of the DVR server from this list. Remote Player then establishes connection with the DVR site and displays the names of its remote cameras in the Camera List Panel.

Selecting the Date of Recording

On the Calendar below the Camera List Panel, choose the desired date of video recording.

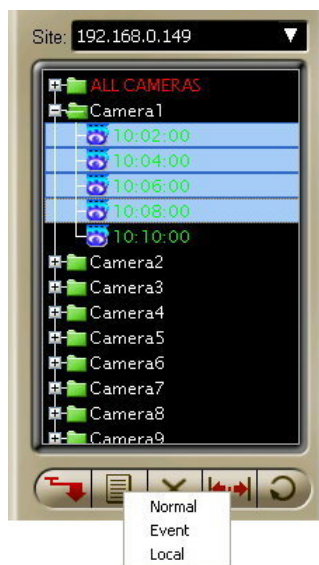
By default, the current month is displayed and the current date is highlighted in the Calendar. Green-marked dates on the Calendar indicate that there are video recordings on those dates.




To select the date of recording:

1. To change to another year, click the left or right double-head arrow repeatedly until you reach the desired year.
2. To change the month, click the left or right arrow single-head arrow repeatedly until you reach the desired month.
3. On the selected month, click the desired date.

Retrieving and Searching History Records



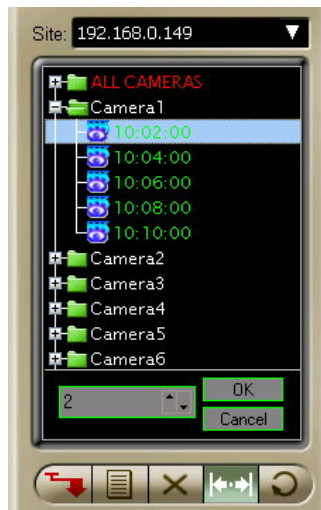
Before you can retrieve, download and play back surveillance video recordings from a DVR site, you first need to specify the type of history records to access. After you have connected to a DVR server and selected a calendar date, click . A pop-up menu then opens, displaying three types of history records of surveillance video recordings: Normal, Event, and Local.

- | | |
|--------|--|
| Normal | Lists the history records of all surveillance videos that were recorded during the selected calendar date. |
| Event | Lists the recording time of events only. |
| Local | Lists the recording time of surveillance videos that were recorded and stored in the local hard drive. |


History records of the selected type will then be retrieved from the DVR server or your local drive and then displayed in the Camera List Panel.

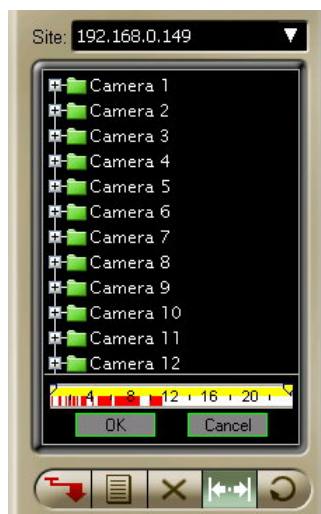
Retrieving a Specified Range of History Records

If you chose "Normal" or "Event" as the type and the retrieved history records are quite long, you can limit the history list by specifying a desired range.




To specify a range of "Normal" history records:

1. Click . A time interval text box will then appear at the bottom of the Camera List Panel.
2. By default, Normal-type history records are listed in intervals of one hour. To change the interval, click the Up/Down arrow button or enter the desired time interval.
3. Click OK to confirm the change. (To retain the original interval, click Cancel.)



To specify a range of "Event" history records:

1. Click . A time ruler will then appear at the bottom of the Camera List Panel.
2. By default, all Event-type history records on the selected calendar date will be retrieved and listed in the Camera List Panel. To limit the history list to a certain time period, drag the two handles on the time ruler to set the desired start and end time.
3. Click OK to confirm the change. (To keep the original history list, click Cancel.)


Playing the Video Recordings

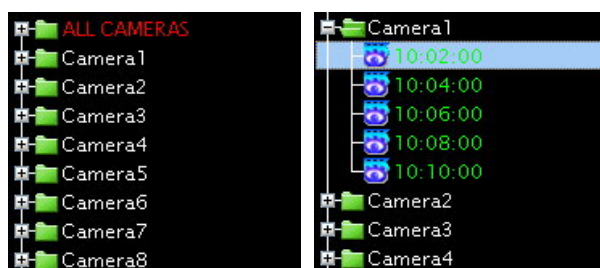
After you have retrieved the desired history records of surveillance video recordings, you can now play and view them on Remote Player.

If you retrieved Normal-type or Event-type history records, you can play the videos directly from the DVR server by streaming. However, if your Internet bandwidth is slow or overloaded, it is recommended that you download the video recordings first to your computer for local playback from your hard drive.

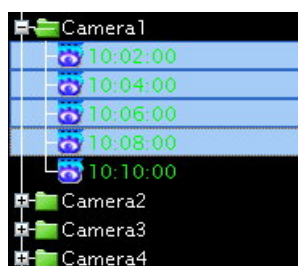
If you retrieved Local-type history records, the videos from these history records are locally stored in your computer. You can just play back the videos directly from your hard drive.


To play back recordings from a DVR server:

1. Click  and choose the type of history records from which to retrieve video recordings. To retrieve all recordings of the selected calendar date, select Normal. Otherwise, to retrieve only the recordings of events, select Event.
2. To view a single video recording only, click the "+" to display first the history records of a desired camera. Then, click the time segment of the recording that you want to view.



If you want to view multiple video recordings simultaneously, hold the [Shift] or [Ctrl] key then click the time segments of recordings that you like to view.



3. To download the video recordings first to your local hard drive, click . If you want to directly stream the video recordings from the DVR server, go to the


next step.

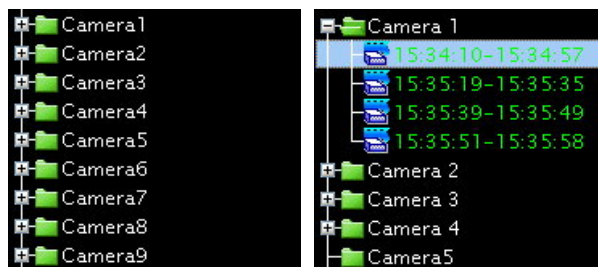
4. Click  to play the video.

This allows you to view the video from start to finish. To pause playback, click this button again.

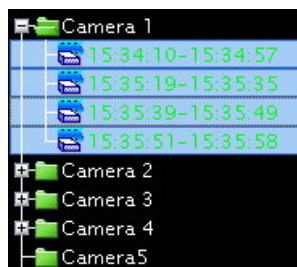
5. To scrub through the video, drag the Jog bar. You can also use the other controls in the Navigation Panel to move back and forth through the video. (See "The navigation Panel" for details on the different button controls of the Navigation Panel).

To play back recordings in the local drive:

1. Click  then select Local.
2. To view a single video recording only, click the "+" to display first the history records of a desired camera. Then, click the time segment of the recording that you want to view.



If you want to view multiple video recordings simultaneously, hold the [Shift] or [Ctrl] key then click the time segments of recordings that you like to view.



3. Click  to play the video.


This allows you to view the video from start to finish. To pause playback, click this button again.

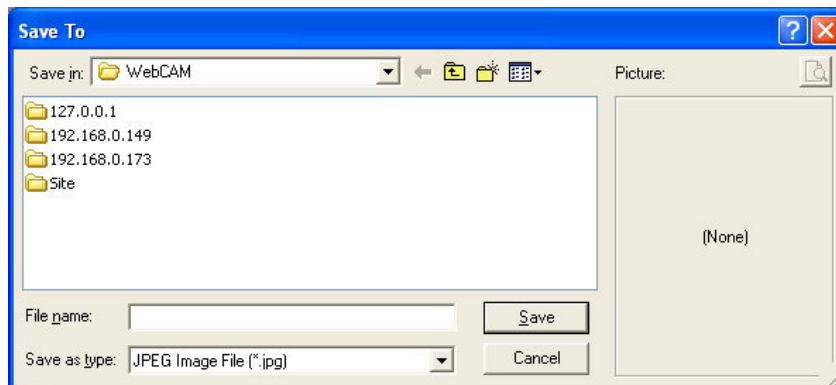
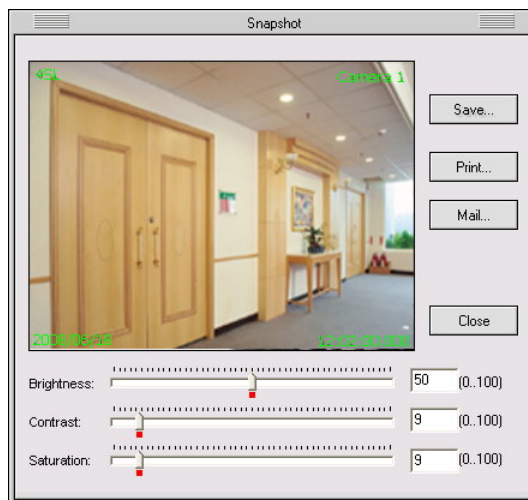
4. To scrub through the video, drag the Jog bar. You can also use the other controls in the Navigation Panel to move back and forth through the video.

Capturing Image Snapshots

If a video recording clearly shows suspicious activities or an intruder in the monitored site, you can notify police authorities and provide them with actual image snapshots.

To take a snapshot:

1. First, play back the recorded video, then click .
2. The Snapshot dialog box then opens, allowing you to enhance the captured image first before saving, printing or sending the image by e-mail.
3. To enhance the image, drag the Brightness, Contrast and Saturation sliders until you get desirable results.
4. To save the image, click the Save button. The Save To dialog box then opens. Type in the file name to use for saving the image and choose whether to save it in JPEG or BMP format. Then, click Save.



5. If you want to print a hardcopy of the image, click the Print button.

Note: When you click Print and you don't have a printer installed, it will prompt a message asking you if you want to install a printer first.

6. To send the image by e-mail, click the Mail button. Your default e-mail program will then open, with the image file automatically attached to a new e-mail message. Enter the recipient's e-mail address, and type in the subject and body of your e-mail message then send it.



Using the Scheduler

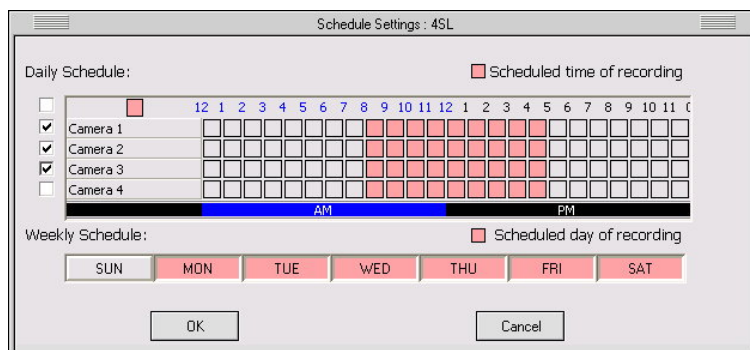
huperRemote can be configured to record surveillance videos on a regular basis. It has a built-in Scheduler that allows you to set up specific day and time schedules for continuous recording of surveillance video from remote cameras on your local drive.

Before opening the Scheduler, you first need to connect to the DVR sites that you want to set up recording schedules for.

Setting up the Recording Schedule

To set up a regular schedule for video recording:

1. In the huperRemote program window, click  to open the Connect dialog box and connect to a DVR site.
Or, if you are already connected to a DVR site, click the site name in the Camera List Panel to select the site.
2. Click  to open the Scheduler.
3. In the Scheduler dialog box, the names of the remote cameras on the DVR site will be displayed. Choose the remote cameras that you want to record video from by clicking the check boxes at the left side of the camera names.
Selected cameras are indicated by a check mark on check boxes.
4. The numbers that are lined up in columns represent the hours of a day. For each selected camera, choose the desired hours when you want surveillance video to be recorded by clicking the boxes underneath the hour columns.




Selected hours are indicated by color boxes. Non-selected (or deselected) hours are indicated by gray boxes.

5. Next, choose the days of the week when you want surveillance video to be recorded by clicking the buttons containing the names of the days of the week. Selected days are indicated by colored buttons. Non-selected (or deselected) days are indicated by gray boxes.
6. When you have finished setting up the cameras and the time and day of recording, click OK.
7. Repeat steps 1 to 6 to set up the recording schedule for another DVR site.


Removing Schedules

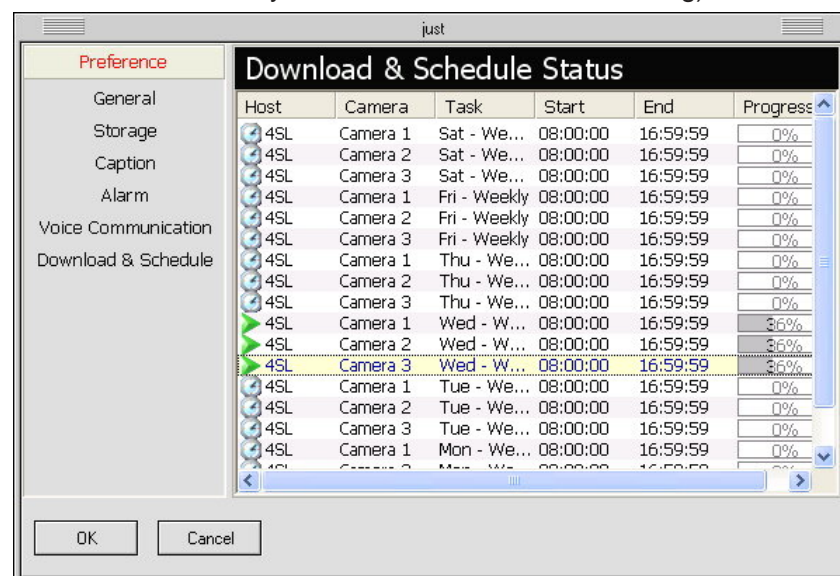
There are three alternative ways you can do to remove some or all of the set recording schedules.

To remove recording times or days in Scheduler:

Click  to open the Scheduler. In the Scheduler dialog box, deselect the unwanted hours or days of the week.

To remove recording times or days in Preferences:

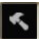
Click  to open the Preferences dialog box, then click Downloads & Schedules. (See the image below). This part of the Preferences dialog box lists the recording times per scheduled day and the current recording status. (The entries in the list that show a clock icon indicate that they are scheduled times of recording).

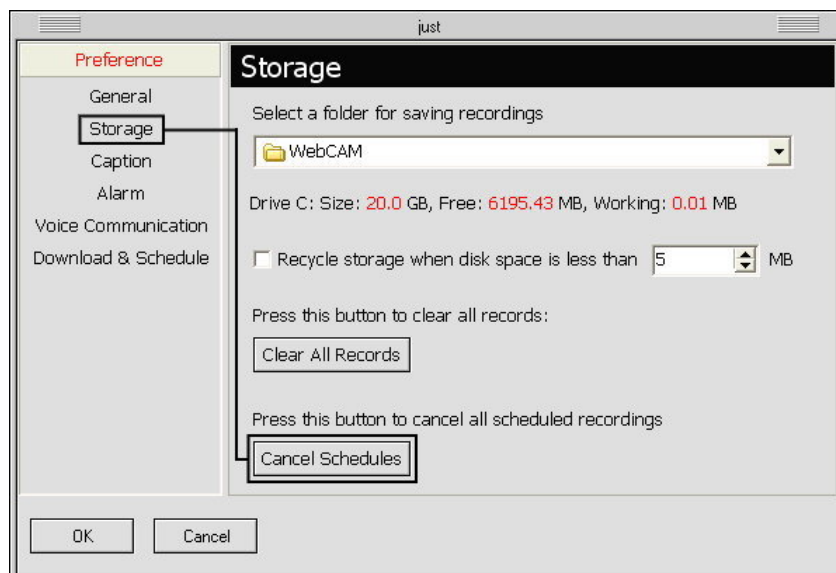


To remove a recording time, right-click the entry that shows the camera name and the unwanted recording "Start" time. Then in the pop-up menu that appears, click DELETE SELECTED.

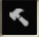
To remove several entries from the list, press Ctrl and click each unwanted entry. Multiple-selected entries will be highlighted in yellow. To remove them, right-click and then click DELETE SELECTED.

To cancel all scheduled recordings:

Click  to open the Preferences dialog box, click Storage, then click Cancel Schedules.

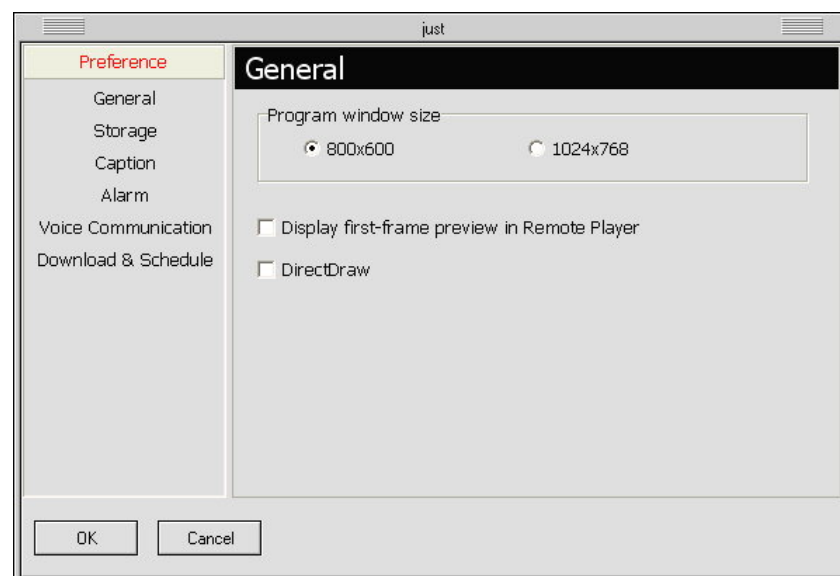


Configuring huperRemote

Click  in the huperRemote program window to open the Preferences dialog box where you can set up the working environment for the huperRemote program. You can choose to enable disk storage recycling for video recordings, enable/display caption display on split screens, set up alarms in your local computer when there are detected events, and more.

Preferences Dialog Box

General



Program window size

Choose the appropriate program window size for huperRemote based on the resolution of your Windows display.

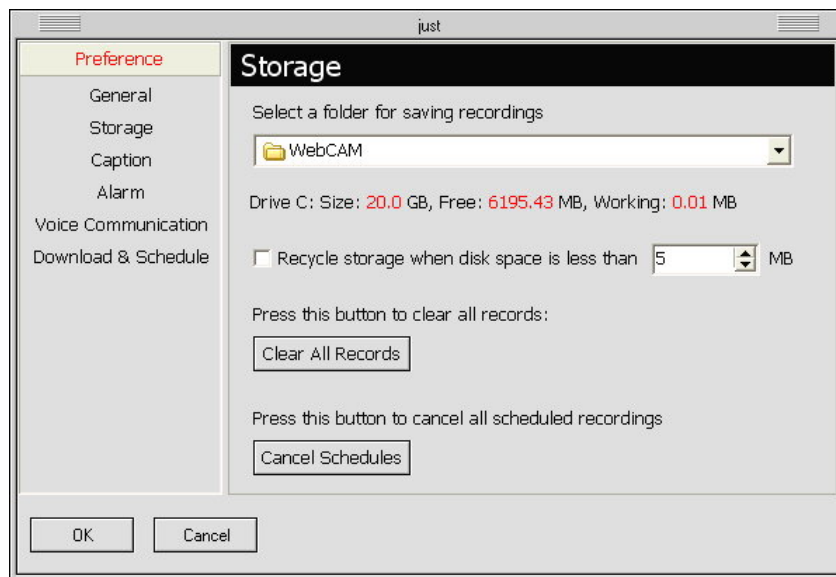
Display first-frame preview in Remote Player

When this option is selected, the first frame of each of the video recordings you chose in Remote Player's Camera List Panel will be shown. This gives you a preview image of each selected video recording.

DirectDraw

Use DirectDraw Engine to display video. This option can reduce CPU consumption and use anti-alias feature. Please make sure your system can support DirectDraw function before checking this option.

Storage



Select a folder for saving recordings

Click the drop-down arrow button to browse through your hard drive, then choose a working folder where to save locally recorded videos and downloaded recordings.

Drive (Size, Free, Working)

This indicates your local hard drive capacity, the remaining disk space, and the amount of disk space already used.

Recycle storage when disk space is less than

When this option is selected, old video recordings will be deleted when the hard disk space has reached the specified limit. This will free up hard disk space for saving new recordings.

Clear All Records

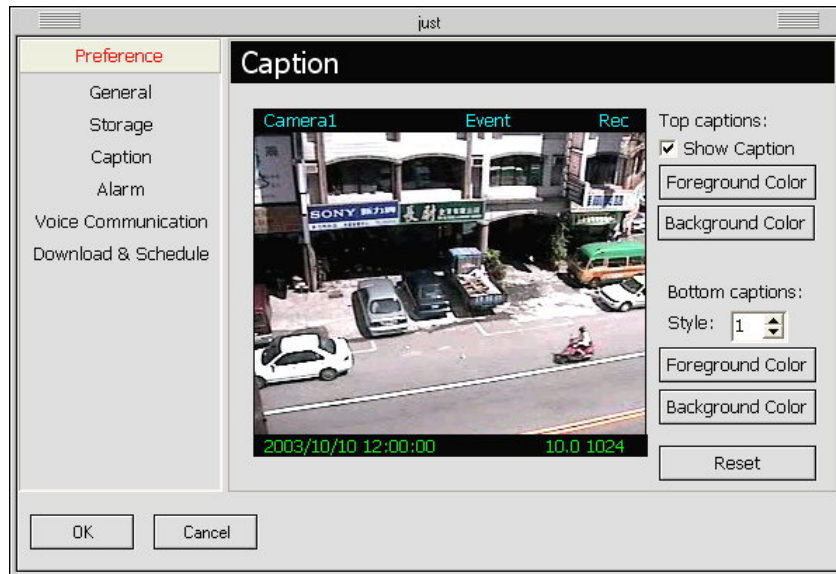
In the text box provided, set the disk space limit.

Click this button to delete all video recordings from the working folder in your local hard drive.

Cancel Schedules

Click this button to cancel all scheduled recordings.

Caption



Top captions

These are the captions that appear on top of the split-screen windows. They display the camera name, detected event, and recording status.

- Show caption
- Foreground Color
- Background Color

When this option is selected, the top captions will be displayed on the split-screen windows. To hide these captions, clear this option.

Click this button to set the text color for the captions.

Click this button to set the color of the text bar.

Bottom captions

These are the captions that appear at the bottom of the split-screen windows. They display the date and time, average frame rate, and data rate.

- Style

There are four display styles for the bottom captions:

Style 0: Hides the captions.

Style 1: Displays the captions with a text bar.

Style 2: Displays the captions without a text bar.

Style 3: Displays the captions in outline style.

- Foreground Color
- Background Color

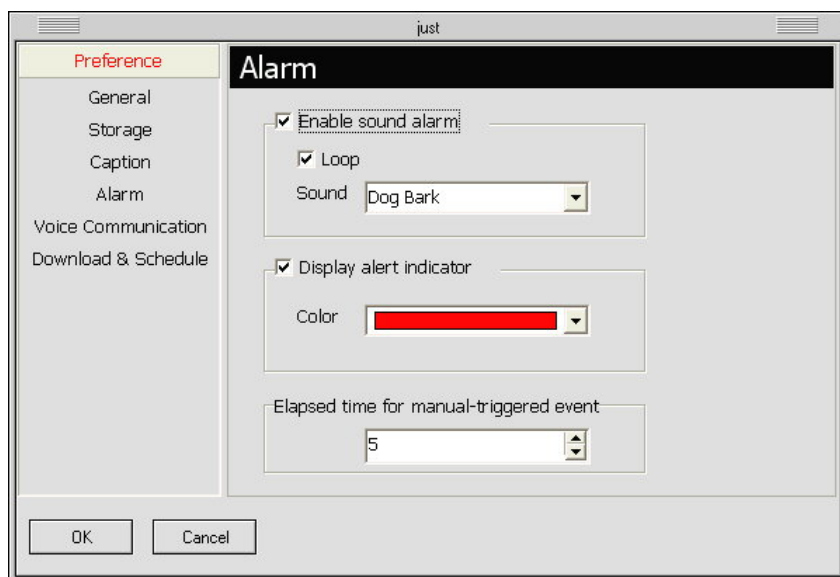
Click this button to set the text color for the captions.

Click this button to set the color of the text bar.

Reset

Click this button to change back to the default settings.

Alarm



Enable sound alarm

Select this option if you want your computer to sound an alarm when there is a detected event.

- Loop
- Sound

When this option is selected, your computer will sound the alarm continuously.

Click the drop-down arrow button then choose the type of sound to use as the alarm.

Display alert indicator

Select this option if you want a blinking alert indicator to be displayed on the split-screen window when there is a detected event.

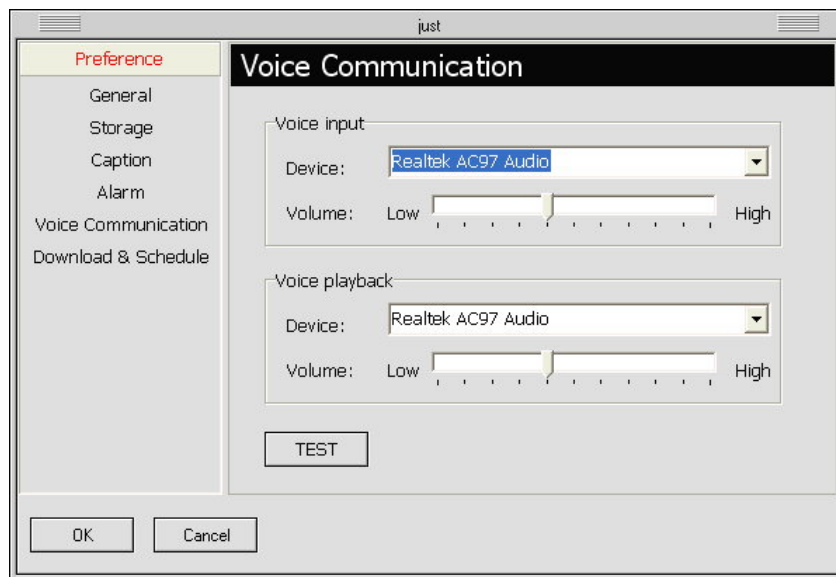
- Color

Click the drop-down arrow button, then choose a color to use for the alert indicator.

Elapsed time for manual-triggered event

Set the time duration for manually triggered events (initiated from your local computer to the remote camera).

Voice Communication



Voice input

- **Device** Displays the audio device used by your input device (e.g. microphone) to capture your voice. If you have more than one audio device installed, select the device you want to use from the drop-down menu.
- **Volume** Drag the slider to adjust the input device's volume.



Voice playback

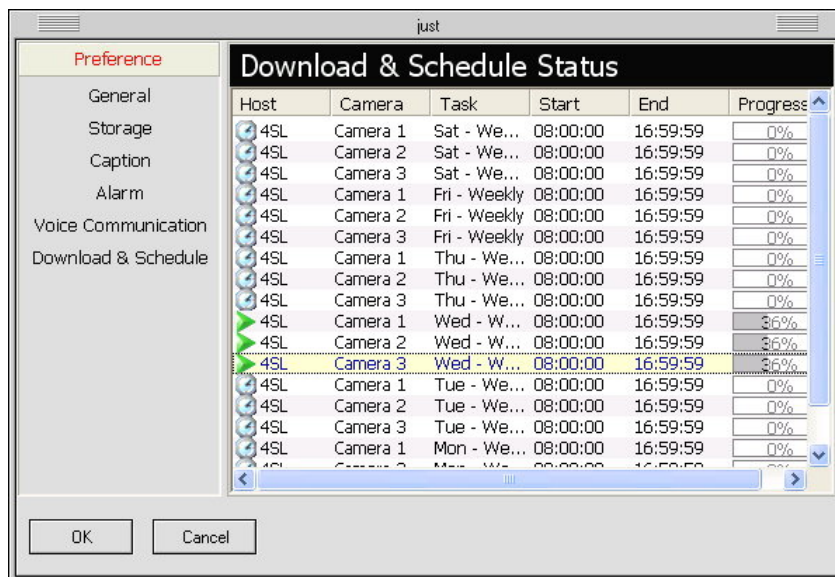
- **Device** Displays the audio device used by your playback device (e.g. speakers) to play back the voice from your counterpart. If you have more than one audio device installed, select the device you want to use from the drop-down menu.
- **Volume** Drag the slider to adjust the playback device's volume.

TEST Click this button to test the volume of the voice input/ output device.

Downloads & Schedules

The Downloads & Schedules section in the Preferences dialog box displays two types of information:

-  The entries that are indicated by a "clock" icon are the preset schedules for video recording.
-  The entries that are indicated by a "play" icon are either scheduled recordings which are currently in progress, or file downloads which are in progress.



When you select an entry and then right-click on it, a pop-up menu will appear. From this menu, you can delete a schedule, show or hide the information list, cancel a scheduled recording, or terminate a file download.

The columns in the information list show the following:

- Host** Shows the name of the remote server.
- Camera** Shows the name of the remote camera.
- Task** Shows the preset recording schedule.
When downloading, this column shows "HTTP" to indicate that the file is being downloaded via the Internet.
- Start** Shows the start time of a schedule, or the start time of a video recording.
- End** Shows the end time of a schedule. or the end time of a video recording.
- Progress** Shows the current progress of a scheduled recording or file download (in percentage).