
Remote Surveillance

- [Web Remote Player](#)
- [Web Remote Player 2.0](#)
- [huperRemote iViewer / gViewer](#)
- [How to Upload / Download Remote Site List with Oftp Server](#)

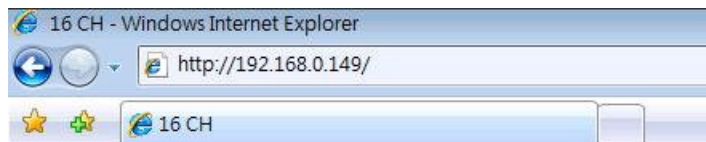
Web Remote Player

The Web Remote Player is a web page interface for users to remote playback video records on IE browser. In the Web Remote Player, Users can easily perform playback / download / snapshot video records from huperVision DVR site server.

Launch Web Remote Player


Please follow the instructions below to launch Web Remote Player.

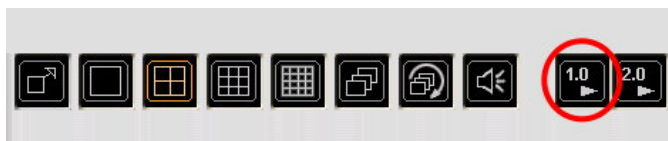
1. Run the IE browser and input the IP address or URL address in the URL bar.



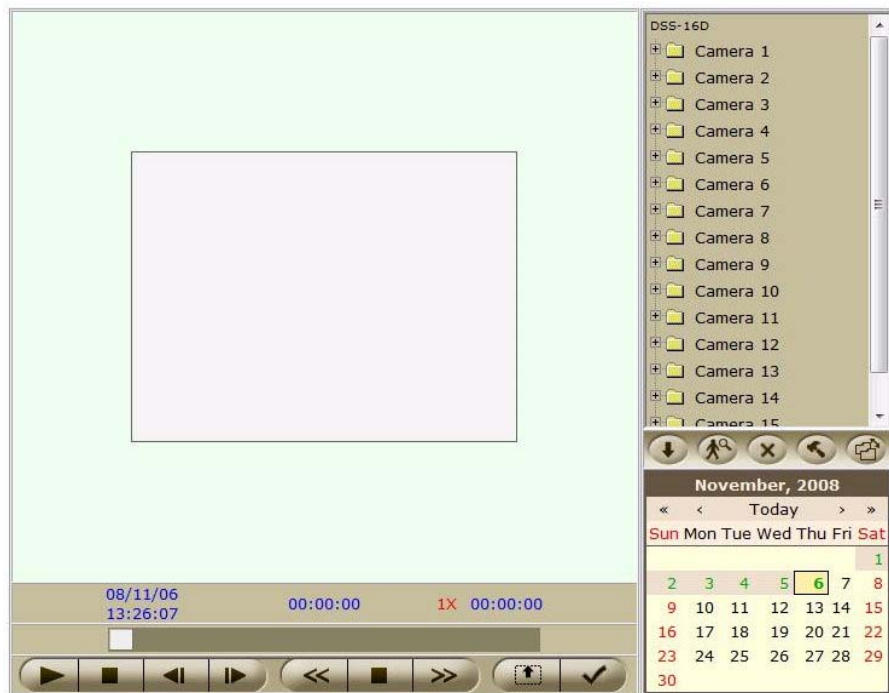
2. Connect to the DVR site and see the first page of Web Remote Viewer.



3. Press the  button to launch the Web Remote Player.



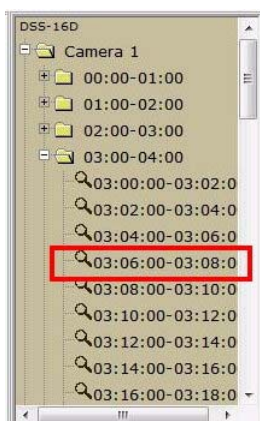
- You will see the Web Remote Player launched in a new opened IE browser.



Load and Playback Video Records

Follow the steps below to load and playback video recordings:

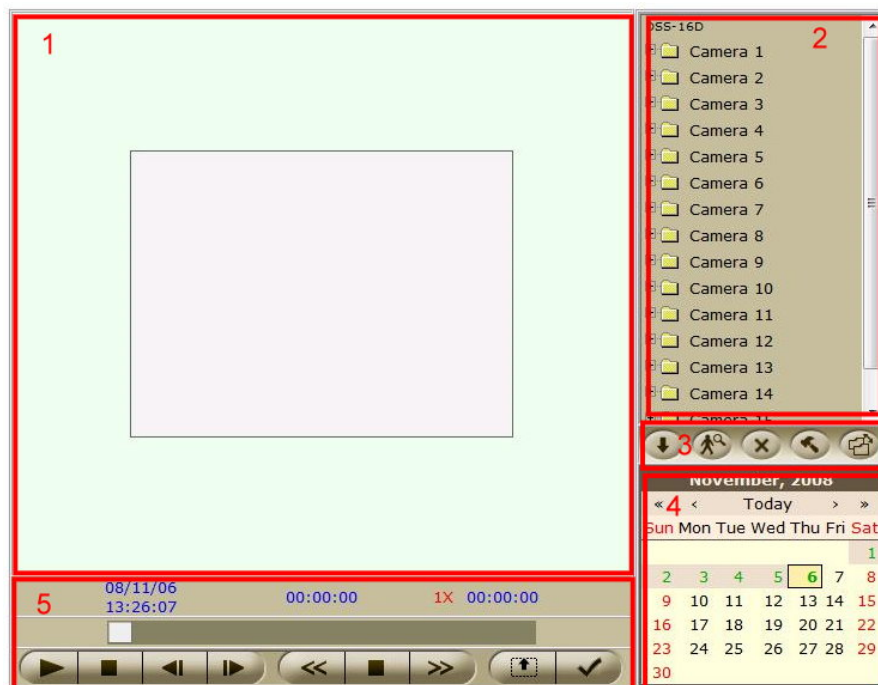
- Press the [+] mark to expand the list In the Record List Area.
- Select a time mark from expanded list.



- Press the Play Button to start playback.



User Interface Areas



- 1** Video Display Area Display recorded video in this area.
- 2** Record List by Camera Area Select target camera from this panel.
- 3** Function Buttons Area Assign starting time and duration to playback video.
- 4** Calendar Area Select specified event from list.
- 5** Playback Control Area Select date to playback video.








Calendar



Date	Press the Date to switch the Record List Result
[<]	Press the [<] to Previous Mon
[>]	Press the [>] to Next Month.
[<<]	Press the [<<] to Previous Year.
[>>]	Press the [>>] to Next Year.
Today	Press the [Today] to current date.

Playback Control



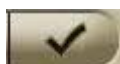
- 1 Start date & time of current playback video clip
 - 2 Current frame time
 - 3 Current playback speed, ranged from 1/32X to 16X.
 - 4 End time of current playback video clip
 - 5 Scroll bar to drag & seek the video clip
-  Press this button to play video. This button will toggle to Pause button.
-  Press this button to pause video. This button will toggle to Play button.
-  Press this button to stop.
-  Press this button when video is paused to step backward 1 frame.
-  Press this button when video is paused to step forward 1 frame.
-  Press this button to reduce playback speed, down to 1/32X.
-  Press this button to reset playback speed to 1X.



Press this button to increase playback speed, up to 16X.



Press this button to enlarge the video, maximum to fill the video area.



Press this button to snapshot the video.

In the snapshot mode, video will be paused and let you to adjust brightness / contrast / saturation before save the snapshot into an image file.



Function Buttons



Download

Download selected video clip from DVR site server.



Mode Switch

Toggle between Normal Recording mode and Event Recordings mode.



Delete

Delete selected video clip which has been downloaded.



Settings

Settings for DVR sites connection.

IP/Domain Name :	<input type="text" value="192.168.0.149"/>	<input type="button" value="OK"/>
UserName :	<input type="text" value="guest"/>	<input type="button" value="Cancel"/>
Password :	<input type="password" value="*****"/>	
Interval :	<input type="text" value="2"/>	
<input type="radio"/> Play Now		

Input DVR site IP/Domain Name, UserName(ID) and Password for connection. The Interval parameter is for the camera list time interval. Select Play Now to playback immediately after the video of selected time interval is downloaded completely.



Connect

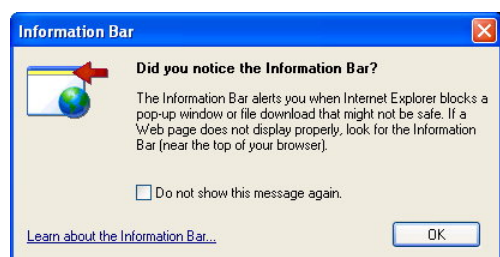
Connect to the DVR sites which been configured in Settings page.

Web Remote Player 2.1 with Download Feature

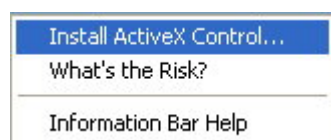
Web Remote Player 2.0 is an IE-based remote application to playback recorded video from remote site with whole new designed user interface. It also has download feature which allows user to download source recording clips.

Follow the steps below to install web remote player 2.1 related components and connect to DVR site:

1. Insert huperVision installation disc in the DVR site server machine and click huperUtility in the autorun window.
2. Click Web Remote Player 2.1 item in the huperUtility window to start installation.
3. After installation, open IE browser on the remote site and type IP address to connect the DVR.
4. The web page will prompt Information Bar message, click OK to proceed.




5. Click the Information bar on the IE browser and select Install ActiveX Control... from drop down menu.



6. Click Install button to install ActiveX Control components for Web Remote.

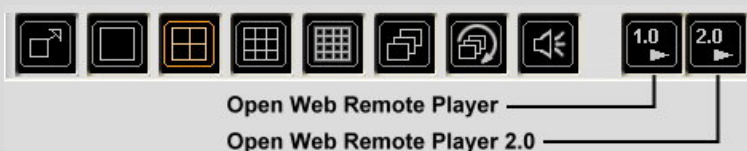


7. After installation, interface for Web Remote is ready and connected to target site.
8. To use Web Remote Player 2.1, press  button to pop up an IE browser window

for Web Remote Player.

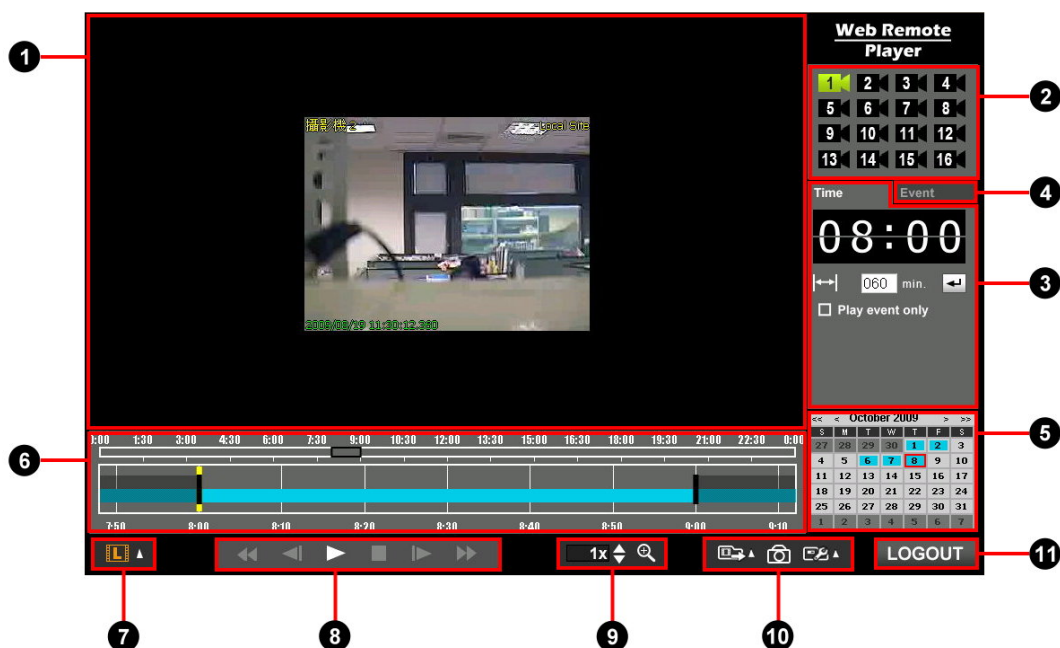
Note:

1. There are two different players for remote playback. Please click the correct button to playback video. To use Web Remote Player, please refer to Appendix 17 for details.



2. Please check the audio device of local DVR site is installed correctly or not if remote playback is failed.

Web Remote Player User Interface



- | | | |
|---|----------------------|--|
| 1 | Playback area | Display recorded video in this area. |
| 2 | Camera Panel | Select target camera from this panel. |
| 3 | Time selection mode | Assign starting time and duration to playback video. |
| 4 | Event selection mode | Select specified event from list. |

- | | | |
|-----------|-------------------------------|--|
| 5 | Calendar | Select date to playback video. |
| 6 | Timebar | Display video recording data of selected camera in specified data. |
| 7 | Quality control | Select playback quality. |
| 8 | Play control panel | Playback function panel: play/pause, stop, previous period, next period, previous frame, next frame. |
| 9 | Additional play control panel | Additional playback functions: playback speed control, zoom in/zoom out. |
| 10 | Output panel | Output & setting functions: Output selection menu, snapshot, setting selection menu. |
| 11 | Login / Logout | Click to login/logout remote site. |

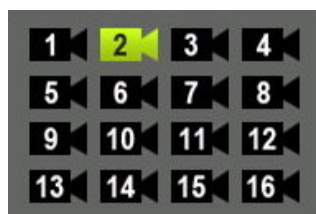
Playback Area



Display video recording data of selected camera at specific date. The display dimension for video is 320x240 or screen fit (using zoom in/zoom out control). The information printed in the video are:

- | | | |
|---------------|---------------|---|
| • Top-Left | Camera Name | Current selected camera name |
| • Top-Right | Site Name | Current connected DVR site name |
| • Bottom-Left | Date and Time | Current date and time of recorded video |

Camera Panel



Camera switch panel and display camera status of connected DVR site. The camera status of icon displayed is listed below:



Active Camera

Current selected camera



Available Camera

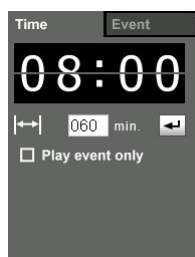
Current available camera of connected site. Switch camera by clicking the icon and will change to active status.



Unavailable Camera

Camera which is unavailable for the connected site

Time Selection Mode

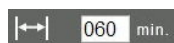


Assign selection area of timebar with starting time and duration. The camera status of icon displayed is listed below:



Starting time

The starting time of selection area of timebar. Click on the hour/minute can flip the clock number one step forward; or you can use mouse wheel to flip the clock forward/backward.



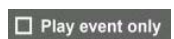
Duration

The selection interval in minutes



Set selection

Click this button to set selection (selection will not be changed if you don't click this button).



Play event only

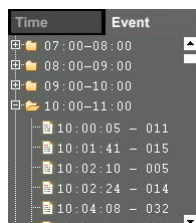
Check this option to playback event recording data only in the selection area

Event

Mode switch

Click this tab to switch to event selection mode

Event Selection Mode



Select event from list to make selection in timebar. The events are grouped by hour. Use “+” / “-” to fold/unfold the event group and select target item.

Calendar



Select date from calendar to playback video. The calendar date status is listed below:

14	Date with recording data	Date contains video recording data of connected remote site.
7	Date without recording data	Date contains no video recording data of connected remote site.
16	Current date	Red frame around date means today.
15	Selected date	Yellow frame around date means date selected for playback.
13	Focused date	White frame around date means the current mouse focus location on calendar.

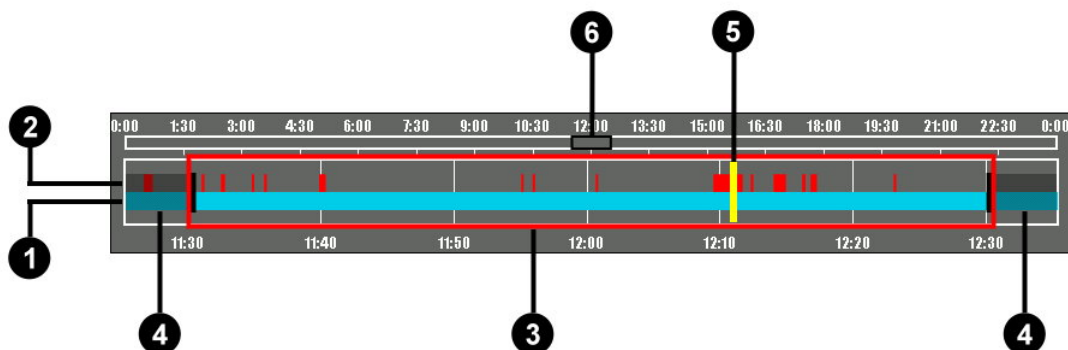
Play Control Panel



Click and select video playback quality. The selected quality icon displayed is listed below:

	Play / Pause	Click to play/pause video.
	Stop	Click to stop playing and set the playback location to the start of the selection area.
	Previous period	Move the playback location 1/10 of selection area backward.
	Next period	Move the playback location 1/10 of selection area forward.
	Previous frame	Move to the previous frame.
	Next frame	Move to the next frame.

Timebar



The timebar displays video recording data with selected date and camera. The components of timebar are listed below:

- 1** Normal recording The blue color bars on the timebar are the normal recording data.
- 2** Event recording The red color bars on the timebar are the event recording data.
- 3** Selection area The area within the red frame is the selected area of timebar.
- 4** Unselected area The area outside the selection area (covered with dark mark) is the unselected area.
- 5** Playback pointer The yellow bar is the pointer of current displayed video data.

- 6** Selection location The black frame is the time location of selection area located in selected date.




The operations of timebar are listed below:

- Click on location bar or Drag selection area (black frame) This operation is used to keep selection interval and change location.
- Right click on timebar This operation is used to zoom out the timebar display ratio.
- Click on unselected area This operation is used to reset the display ratio of selection area.
- Drag selection area boundary This operation is used to change the start or end position of selection area. The selection interval is also changed.
- Click within selection area or drag playback pointer (yellow bar) This operation is used to change the playback position of current video.

Quality Control





Click and select video playback quality. The selected quality icon displayed is listed below:

- | | | |
|---|----------------|---|
|  | High quality | Play video with high streaming quality. |
|  | Medium quality | Play video with medium streaming quality. |
|  | Low quality | Play video with low streaming quality. |

Additional Play Control Panel












Additional playback functions listed below:

- | | | |
|---|--------------------|--|
|  | Play speed control | Click up/down arrow to increase/decrease playback speed. The range of playback speed is from 1/16X to 16X. |
|  | Zoom in / Zoom out | Click to zoom in/zoom out video in the playback area. The video is displayed in 320x240 or fit to playback area. |

Output Panel



Output related functions. The function icons are listed below:

	Output selection menu	Click to pop up sub items for video output selection menu.
	Export video	Click to export current selection area of timebar as AVI file.
	Download source file	Click to download source recording file of current selection area of timebar as AVI file.
	Download with timer	Click to download source recording file of current selection area of timebar as AVI file according to timer setting.
	Snapshot	Click to save current video frame in the playback area as JPEG file.
	Setting selection menu	Click to pop up sub items for setting selection menu.
	Assign AVI file location	Click to pop up folder selection dialog to assign path of exported AVI file.
	Assign snapshot file location	Click to pop up folder selection dialog to assign path of snapshot file.
	Set timer	Click to pop up Set timer dialog to assign timer for file download (used with Download with timer command).

Login / Logout

LOGIN

LOGOUT

Click to login/logout remote site. Click the **LOGIN** button will display the login interface in the playback area as below.

IP Address

User

Password

☒ OK ☐ Cancel

Enter IP address, user name, password, and click OK button to login to the target remote site. If you press play button from Web Remote, it will pop up Web Remote Player interface and login automatically. Click **LOGOUT** button to disconnect connection.

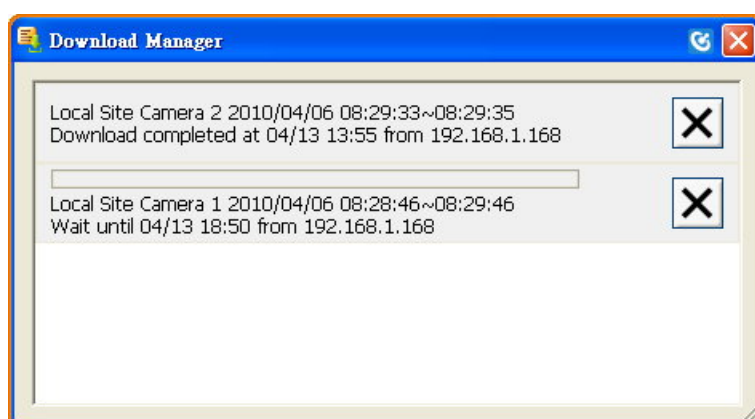
Download Manager

The download manager will be enabled and resided in the system tray when the source video clip is added to download list. And an “Add a new download item” message will pop up.



Download Manager

Double-click this icon or right-click this icon then select Show from menu can pop up Download Manager dialog as below:



The functions buttons in the download Manager are listed below:



Pause

Click to suspend the download process.



Go

Click to proceed the downloading.



Remove

Click to remove item from list. If the file is not downloaded completely, it will pop up message to ask to cancel download or not.

Close the Download Manager dialog will not end the download process. It will reside in the system tray and do background downloading. End the Download Manager program from the system tray will suspend all the download process till Download Manager started again.

huperRemote iViewer / gViewer

huperRemote iViewer/gViewer supports online video surveillance for iOS/Android devices. Remote users are able to easily operate video surveillance like video camera monitoring and PTZ camera control as on the computer. huperRemote iViewer/gViewer offers you Single/4 split screen view switch, One touch snapshot, On-screen PTZ control, Full screen view and Adjustable streaming quality.


Get huperRemote iViewer

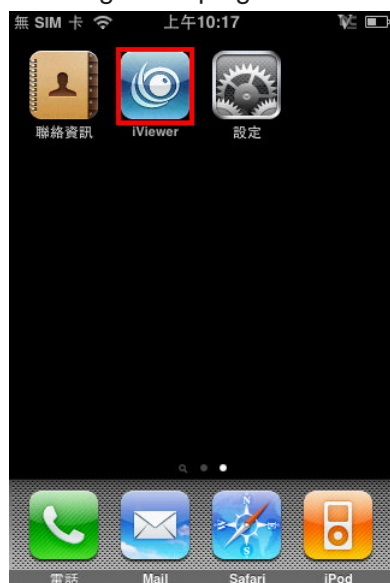
Search for huperRemote iViewer program on the [iTunes.com webpage](https://www.apple.com/itunes/webpage) or App Store and then install it as general procedures.

Get huperRemote iViewer

Search for huperRemote iViewer program on the Amndroid Market and then install it as general procedures.

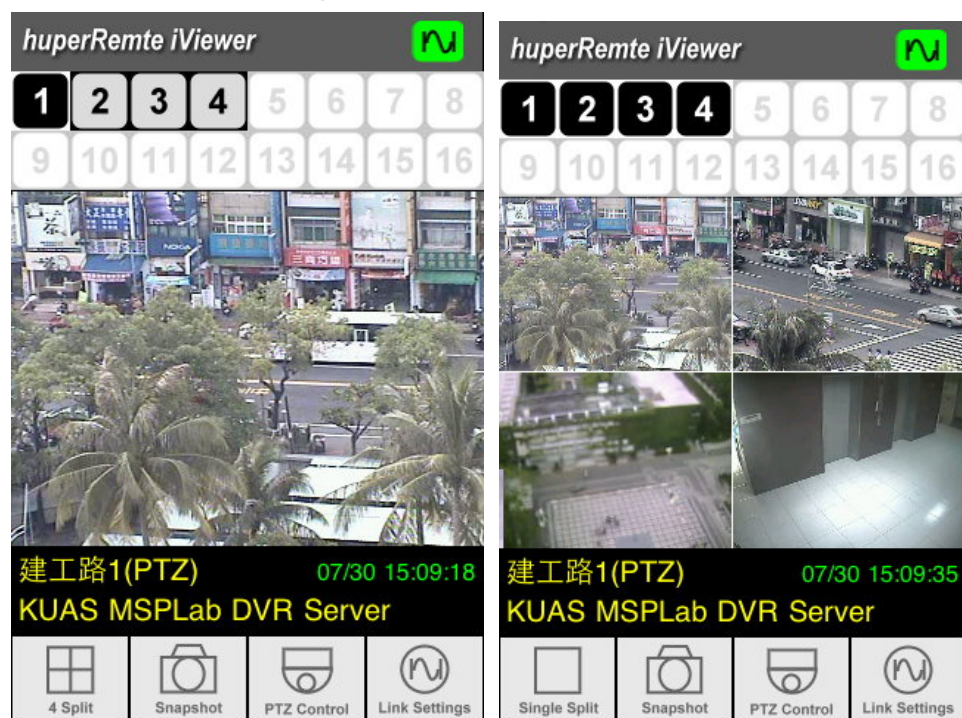
Using huperRemote iViewer

Enter the main screen of your iOS/Android device and then click  to launch the iViewer/gViewer program.



huperRemote iViewer Interface

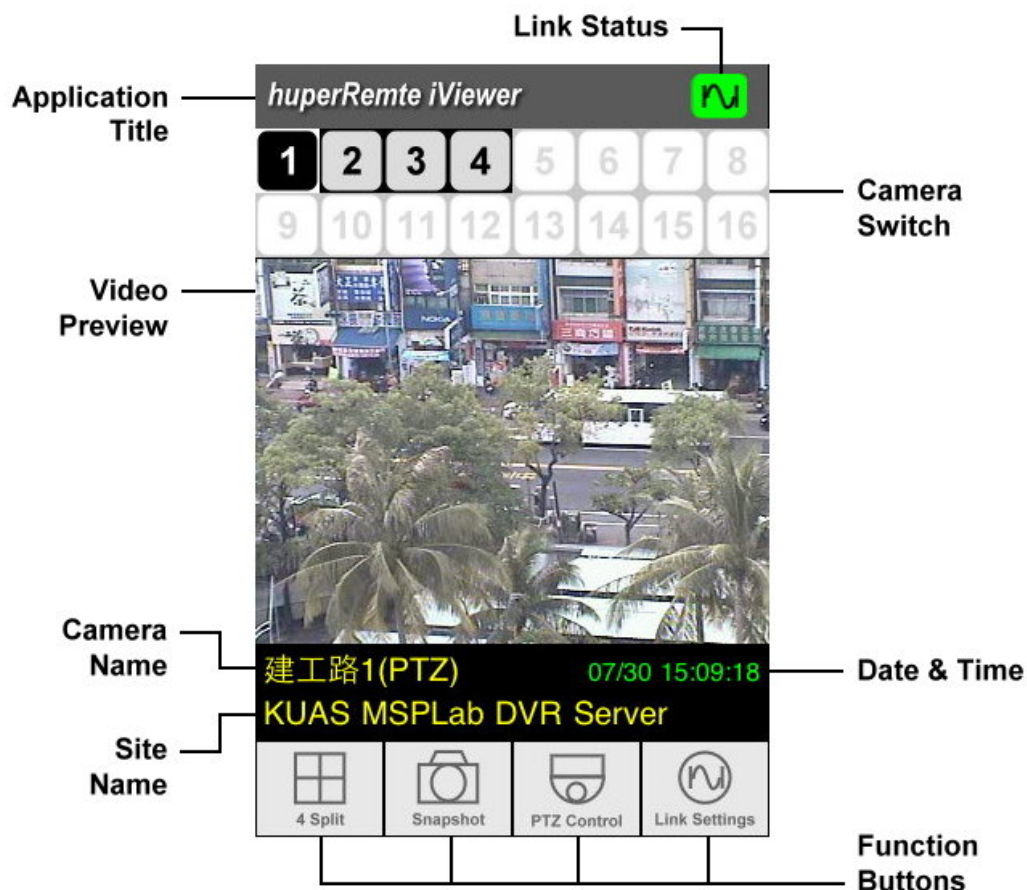
The huperRemote iViewer/gViewer main interface (Vertical) is shown as below:



When you rotate iOS/Android device, huperRemote iViewer/gViewer UI will turn to be full screen display horizontally.



Monitoring Remote Cameras



Link Status



Offline Status, click it to get online according to your online setting






Connecting Status

Online Status, click it to get offline

Camera Switch



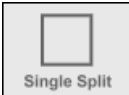




The icon shows link camera status and cameras allowed to switch. Every icon works as respective button for you to switch cameras. The status of camera icons shows as below:

-  Disable, camera is not available.
-  Normal, camera is available but not selected.
-  Normal with event indicator
-  Down, camera is available and selected.
-  Down with event indicator

Function Buttons



The lower function buttons of UI works for following functions:

	Single Split Switch	Press this button to switch to single view.
	4 Split Switch	Press this button to switch to 4-split view.
	Snapshot	Press this button to capture image of current video screen. The captured image will be stored to camera roll.
	PTZ Control	Press this button to display PTZ camera control on video screen.
	Link Settings	Press this button to switch to link settings interface.

Full Screen Display

Under online connecting, the display will turn into horizontal full screen display(single split or 4 split) when making iOS/Android devices a 90-degree rotation. The display is as below:



- When rotating iOS/Android devices back, the display will return to original UI screen.
- Support multi-touch to pinch to zoom in and zoom out (iOS only). The resolution won't be changed when zooming in the display.

PTZ Control Mode

Under PTZ Control Mode, there appears related control buttons for PTZ operation in video preview screen. All the control buttons are as below:




Vertical display mode

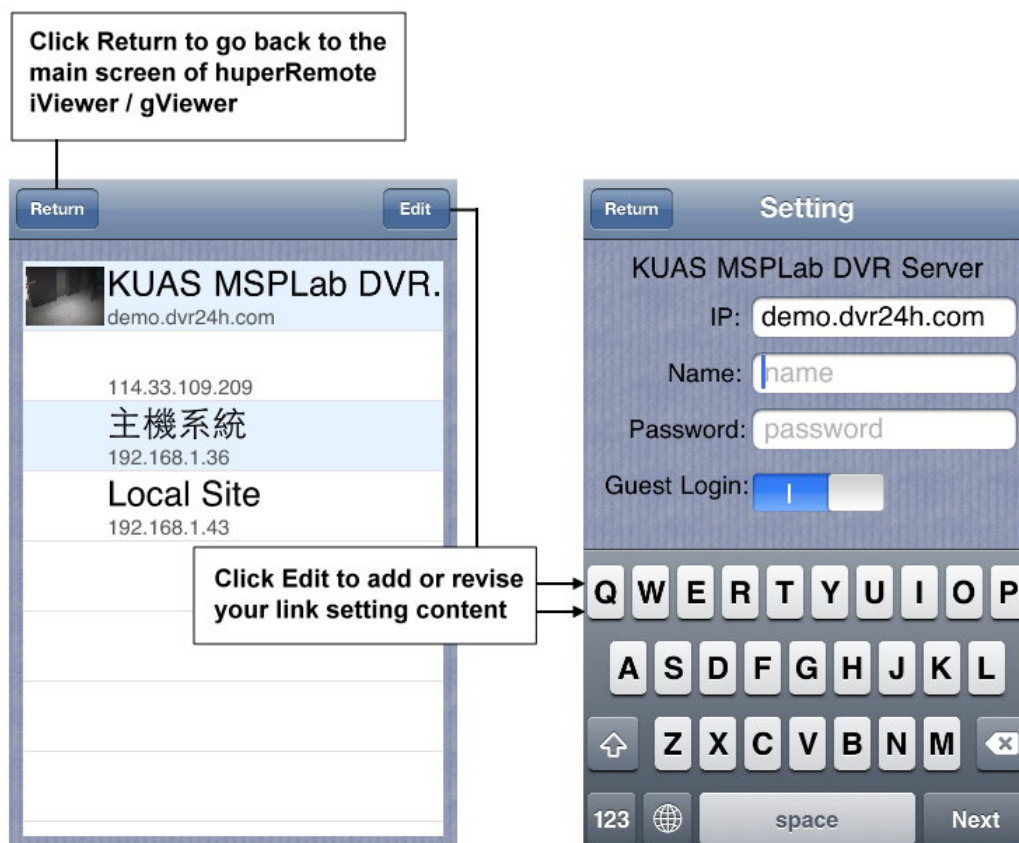


Full screen display mode

Link Settings



Click  to show list screen of link settings as below:



How to Upload / Download Remote Site List with Oftp Server

Oftp Server is a Windows based utility to download/upload the remote server list of huperLab surveillance sites from/to your iOS/Android mobile devices. Like the bookmarks in the internet browser, this remote server list, stored in huperRemote iViewer/gViewer, allows you to easily access any remote sites by selecting the pre-located site from the list.





With this Oftp Server, you can further edit the remote server list in your computer and forward to any iOS/Android mobile devices.

Before using Oftp server program, please download the file Oftp.rar from huperLab web site and extracted to the target folder.

Download link: <http://www.huperlab.com/english/files/soft/Mobile/Oftp.zip>

Using Oftp server

Follow the steps below to use Oftp server:

1. Double-click Oftp.exe program in your target folder.
 2. Enable Wi-Fi access of iOS/Android devices and connect to the access point located in the same local network with the computer running Oftp sever program.
 3. Run huperRemote iViewer/gViewer and click the "Link Settings" button.
 4. huperRemote iViewer/gViewer will auto-detect Oftp server program and display  and  icons at the top of the Linking Settings page.
- | | | |
|---|----------|---|
|  | Download | Download remote server list from the computer running Oftp sever program. |
|  | Upload | Upload remote server list to the computer running Oftp sever program. |

Managing remote server list

There are two ways to manager remote server list:

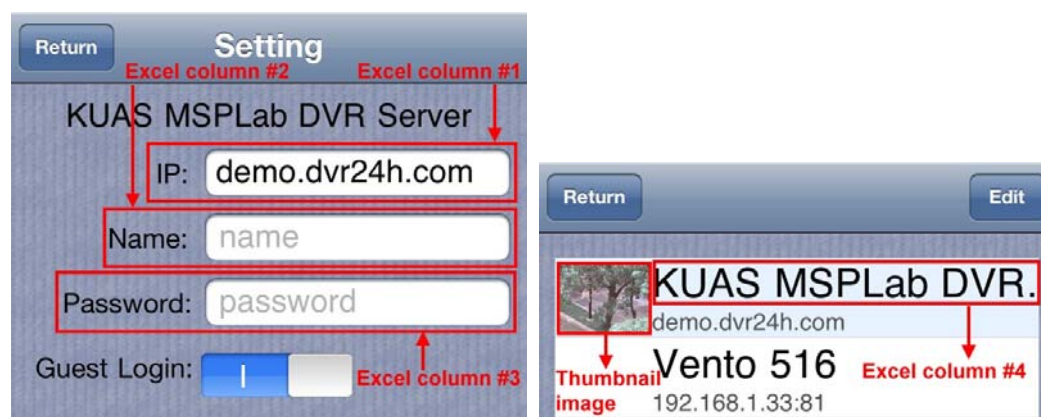
1. Build remote server list on your local computer and send to mobile devices.
2. Transfer remote server list to your local computer and transfer to other mobile devices

Build remote server list on your local computer

Follow the steps below to build remote server list on your local computer.

1. Open the list.xls (Excel file) in the target folder and edit the file with the format listed below:

Excel file column order	Content
Column 1	Site identifier <ip/domain name>:<web port number>
Column 2	Username
Column 3	Password
Column 4	Site name





2. Drag the file list.xls to x2list.exe icon in the target folder after editing. It will start converting file and create corresponding linking files to both iphone and android sub folders.
3. You can also add thumbnail bitmap image of linking file both iphone and android sub folders with the following naming rule:
 <ip/domain name>.bmp or <ip/domain name>_<web port number>.bmp
 EX: 192.168.1.123.bmp or 192.168.1.123_80.bmp

Notes: Oftp server program will not auto-resize the thumbnail image. It will take more time to upload the thumbnail and load the link setting page if your thumbnail image size is too large.

Transfer remote server list to your local computer and transfer to other mobile devices

Follow the steps below to transfer remote server list to your local computer and transfer to other mobile devices:

1. Press  on your mobile device to upload remote server list to your local computer (Oftp server program is running).
2. Drag the file settings.dat from iphone subfolder (upload from iOS device) or com.huperlab.gViewer_preferences.xml from android subfolder (upload from Android device) to x2list.exe icon to create a new list.xls. This action will overwrite the original list.xls file.
3. You can edit the list.xls if necessary. Then drag the file list.xls to x2list.exe icon to generate a new set of linking files (settings.dat for iOS and com.huperlab.gViewer_preferences.xml for Android).
4. Press  on your mobile device to download new remote server list (Oftp server program is running).

Notes: The above process is used for...

- Transfer file from iOS devices to Android devices or Android devices to iOS devices.
- Transfer file from mobile devices and edit linking settings

If you want to transfer through the same mobile system (iOS to iOS or Android to Android), just keep Oftp server program running, then upload the list and download to another device.