

Record Player

- [Introduction](#)
- [Program Interface: An Overview](#)
- [Types of databases](#)
- [Viewing recorded video](#)
- [Saving video](#)
- [Capturing image snapshots](#)

Record Player

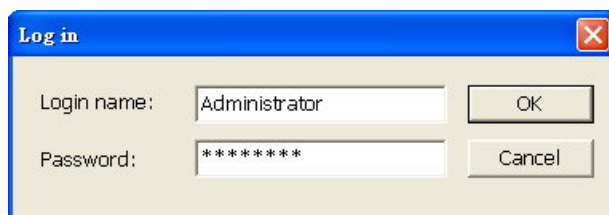
Record Player lets you retrieve and view videos that have been digitally recorded by Site Server. It lists history records by time segments or by the actual occurrence of events. At most, recordings from 16 different video cameras or 16 recorded events can be simultaneously played on the program screen.

Launching Record Player

To launch Remote Player, click  on the Site Server program screen. You can also run this program from the Windows "Start" menu by selecting Start - Programs - huperVision v1.5 - Record Player.

By default, Record Player will allow any user to have access to the program. To restrict the program's access rights only to the local Administrator or to an authorized user account, you can enable access control via Site Server. For more information on this, see Chapter 2.

When access control is enabled, you will be prompted to logon to the Record Player. In the Log in dialog box, enter "Administrator" or the authorized user account name as the Login name and enter the Password. Then click OK.



Program Interface: An Overview

Basically, these are the controls that you will need to use when you retrieve history records and play back previously recorded videos:

Silver scheme version



- 1** Record type

From this drop-down list, choose whether to search for video recordings by time segments or by the type of events. Select "All records" to search by time segment.
- 2** Camera

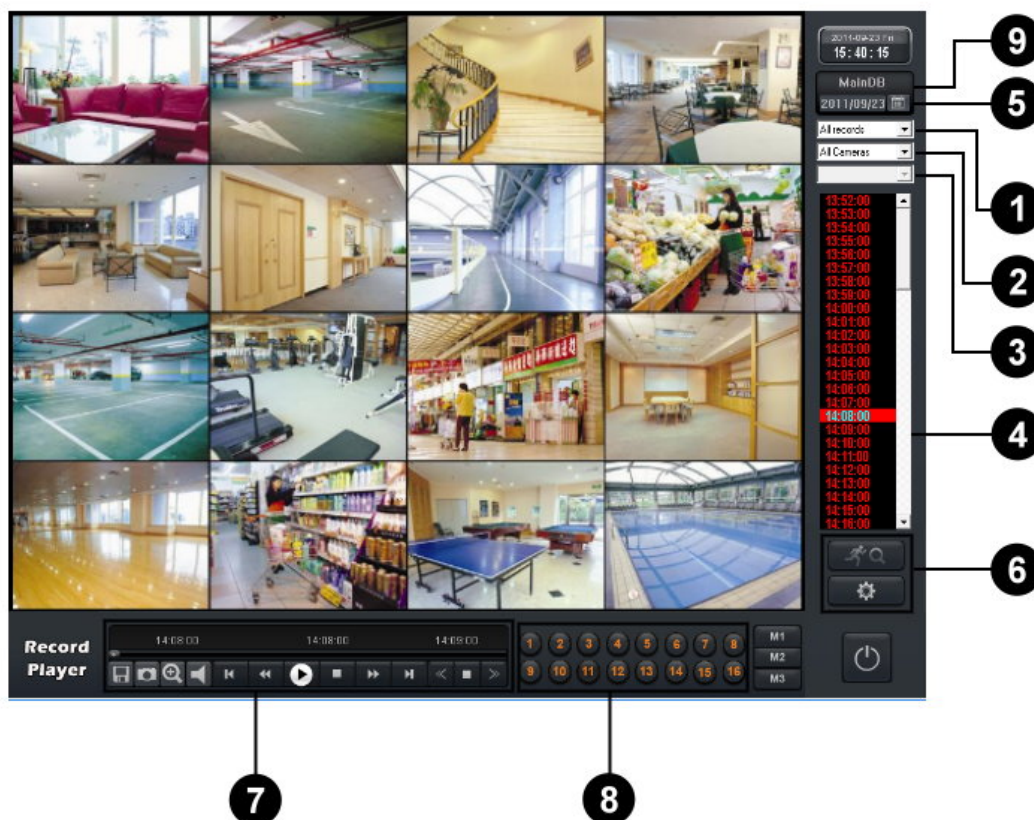
From this drop-down list, choose all or a single camera where to retrieve records from.
- 3** Line/Area name

If you are searching for Virtual fence detection or Secure zone detection events, you can choose the Line name or Area name from this drop-down list.
- 4** History list

Select a time segment or event from this list.

- 5** Date controls To access a specific day's history records, specify the date and retrieve its records by using these controls.
- 6** Other controls Click these buttons to access the Preferences dialog box, apply Smart Detection to video records, etc.
- 7** Navigation Panel Use the navigation controls for playback of video recordings.
- 8** Camera selection This is the Camera Selection Panel. Click the camera number to select a camera. The controls here will change when you switch to displaying history records by type of events.
- 9** Database This shows the name of the database that contains video records.

Black scheme version



- 1** Record type From this drop-down list, choose whether to search for video recordings by time segments or by the type of events. Select "All records" to search by time segment.

- 2** Camera From this drop-down list, choose all or a single camera where to retrieve records from.
- 3** Line/Area name If you are searching for Virtual fence detection or Secure zone detection events, you can choose the Line name or Area name from this drop-down list.
- 4** History list Select a time segment or event from this list.
- 5** Date controls To access a specific day's history records, specify the date and retrieve its records by using these controls.
- 6** Other controls Click these buttons to access the Preferences dialog box, apply Smart Detection to video records, etc.
- 7** Navigation Panel Use the navigation controls for playback of video recordings.
- 8** Camera selection This is the Camera Selection Panel. Click the camera number to select a camera. The controls here will change when you switch to displaying history records by type of events.
- 9** Database This shows the name of the database that contains video records.

Types of databases

There are two types of databases that can be loaded into Record Player and from which history records can be retrieved:

Main database



This is the default database that is opened in Record Player, and it is the video database that the Site Server program uses to save recorded surveillance video. The record storage allocated in Site Server's Preferences dialog box: General tab comprises the entire Main database. (See "Assigning disk storage" in Chapter 2 for details on allocating record storage.)

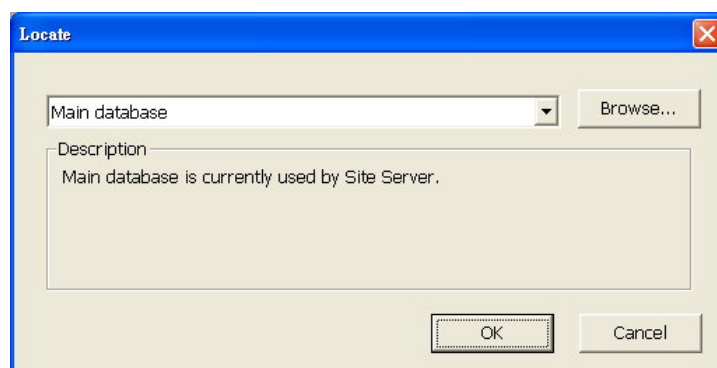
Backed-up databases

These databases contain daily/manual backup copies of recorded surveillance video. Each day's digital recordings can be backed up in a separate database using hupervision's Backup Scheduler program. (Refer to Chapter 4 for more information on Backup Scheduler.)

Loading a backed-up database

To load a backed-up database:

1. Click  in silver scheme or  in black scheme, then on the pop-up menu, click Locate.
2. In the Locate dialog box, the paths of previously backed-up databases will be listed in the drop-down list. Select one of these databases, or if the desired database is not listed, click Browse to locate it.
3. After loading a backed-up database, you can select the "Main database" in the Locate dialog box to return to the Main database.




Viewing recorded video

To search for recorded surveillance videos and view them, first choose the date of recording, select the video camera, and retrieve the history records of the selected date and camera. Then, use the Navigation Panel to play back recorded videos.


Selecting the date of recording

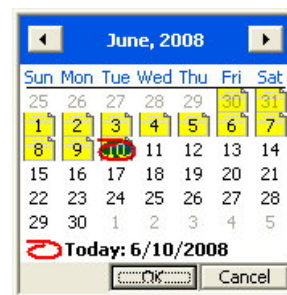
There are two ways of selecting the recording date:

- Enter the date of recording in the text box beneath the history record list, and click  to retrieve the history records of the selected date.



Or,

- Click . A Calendar then opens, displaying the current month. The circled day on the calendar indicates that it is the current date. The boxed days indicate that there were recorded videos during those days.



To select a date:

- Click the left/right arrow button to display the previous/next month on the calendar.
- Click a date on the calendar to select it.
- Click OK to close the Calendar.
- The history records of the selected date are automatically retrieved.

History records of the selected date are then displayed in the History list. To find and play back video recordings from the history list much faster, you can refine the search by limiting the search to time segments or to specific type of events.



Retrieving records from a specific camera

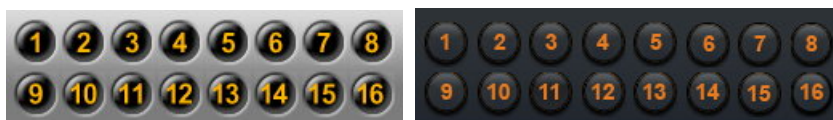
To retrieve records from a specific camera:

- Choose the camera number where you want to retrieve records from the "Camera" drop-down list.
- From the "Record type" drop-down list, choose the type of record you want to retrieve.

Viewing records by time segments

To view records by time segments:

1. Select "All Records" from the "Record type" drop- down list.
2. By default, the History list displays time segments in intervals of one hour.
To change the interval, click  in silver scheme or  in black scheme then click Preferences in the pop-up menu. In the Preferences dialog box, specify the desired interval for displaying time segments.
3. Click a desired time segment in the History list.
4. Select All Cameras in the Camera drop-down list, then in the Camera Selection Panel, click the cameras whose video recordings you want to access for the selected time segment. As you select more cameras, the number of split screens increases. (See "Selecting video cameras" below for more details on Camera buttons and split screens.)



Note: To have different combinations of camera selections and store each set of combinations, use the Memory buttons. (See "Memory buttons" for details.)

5. When you click the Play button on the Navigation Panel, video recordings from the selected cameras will simultaneously be played on-screen. (See "Navigation Panel" for more details.)

Selecting video cameras

The Camera buttons in the Camera Selection Panel are only enabled when All Cameras is selected in the Camera drop-down list. The Camera buttons on the Camera Selection Panel are toggle buttons and allow multiple selection of video cameras. To view recorded videos from selected cameras, choose the video cameras by clicking the corresponding number buttons. To deselect video cameras, click on their corresponding number buttons again.

The number of selected cameras determines the split screen layout of the Record Player program screen, as depicted in the table below.

Number of selected cameras	Split screen layout
1 camera	Single view
2 to 4 cameras	4 split screens
5 to 9 cameras	9 split screens
10 to 16 cameras	16 split screens

Memory buttons



When you need to select different video cameras per time segment, it could be tedious to keep on selecting and deselecting the Camera buttons on the Camera Selection Panel. To save you the trouble of reselecting and deselecting cameras, Record Player provides three Memory buttons that can be used to store three different combinations of camera selections. These memory buttons are only enabled when All Cameras is selected in the Camera drop-down list.

To store a combination of camera selections to a Memory button:

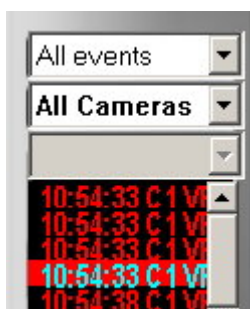
1. Select the desired cameras (or deselect unwanted cameras) by clicking the Camera buttons on the Camera Selection Panel.
2. Click and hold your mouse over a Memory button for 2 seconds. The Memory button flashes slowly as it stores your camera selections. Release your mouse button when you see the Memory button flashes more quickly.
3. Repeat the above steps to store other combinations of camera selections to the other Memory buttons.

Next time you click on the Memory buttons, Camera buttons will automatically be selected according to the stored combinations.

Viewing records by events

To search for video recorded events, select one of these three options from the "Record type" drop-down list:

- All events



When selected, the program searches for all events that were recorded on a specified date and displays them in the History list.

The History list displays these all types of recorded events, which include: Motion, Sensor, Manual, Missing & left object, Flame, Virtual fence intrusion, and Secure zone intrusion. The list shows the time of recording, camera number, and the type of event.

The type of event is indicated as follows:

(Mo)	Motion event
(S"n")	Sensor event, where "n" represents the sensor number
(Ma)	Manually triggered event
(Fl)	Flame event
(Mi)	Missing & left object event
(Vf)	Virtual fence intrusion
(Sz)	Secure zone intrusion
(Sc)	Scene change event
(Fd)	Face event
(Ld)	Loitering event
(Cp)	Car plate event
(Sd)	Smoke event

- Motion events

When selected, the program searches for all motion detected events that were recorded on a specified date and displays them in the History list. The History list shows the actual time of recording and the camera device that recorded the event.

- Sensor events

When selected, the program searches for all sensors detected events that were recorded on a specified date and displays them in the History list. The History list

shows the actual time of video recording and the sensor device that detected the event.

- **Manual events**

When selected, the program searches for all manually triggered recordings of a specified date and displays them in the History list. The History list shows the actual time of video recording and the camera device from which surveillance video was recorded.

- **Flame events**

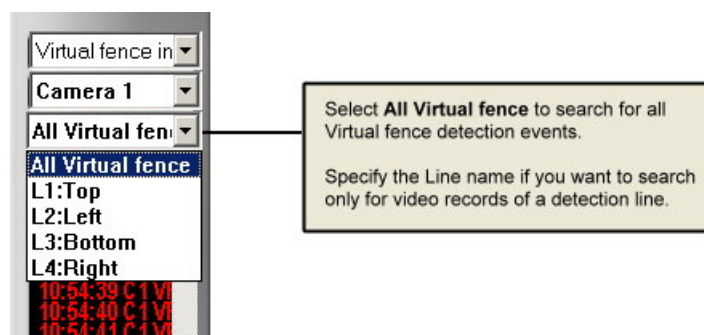
When selected, the program searches for recordings that have flames detected during a specified date and displays them in the History list. The History list shows the actual time of recording and the camera device that recorded the event.

- **Missing & left object detection events**

When selected, the program searches for all missing object and suspicious object events that were detected and recorded on a specified date and displays them in the History list. The History list shows the actual time of recording and the camera device that recorded the event.

- **Virtual fence detection events**

When selected, the program searches for video records that recorded people or objects passing through detection lines during a specified date and displays them in the History list. The History list shows the actual time of recording, the camera device that recorded the event, and the Line number.



- **Secure zone detection events**

When selected, the program searches for video records that recorded people or objects entering forbidden zones during a specified date and displays them in the

History list. You can search for all Secure zone detection events, or specify the Area name if you want to search only for video records that recorded intrusions on one specific area.

- **Scene change detection events**
When selected, the program searches for recordings that have dramatically background changes detected during a specified date and displays them in the History list. The History list shows the actual time of recording and the camera device that recorded the event.
- **Face events**
When selected, the program searches for recordings that have faces detected during a specified date and displays them in the History list. The History list shows the actual time of recording and the camera device that recorded the event.
- **Loitering detection events**
When selected, the program searches for all loitering detected events that were recorded on a specified date and displays them in the History list. The History list shows the actual time of recording and the camera device that recorded the event.
- **Car plate detection events**
When selected, the program searches for recordings that have car plates detected during a specified date and displays them in the History list. The History list shows the actual time of recording and the camera device that recorded the event.
- **Smoke events**
When selected, the program searches for recordings that have smokes detected during a specified date and displays them in the History list. The History list shows the actual time of recording and the camera device that recorded the event.

Viewing video recorded events

When you switch to displaying history records by event, Record Player provides the following button controls for setting the split screen layout and for navigating between records in the History list.



Split Screen Layout buttons

Set the number of split screens to use for event playback by clicking one of these buttons. Up to 16 split screens can be selected.



Record Navigation buttons

When playing back events in single view, click these buttons to move up or down one record in the History list.

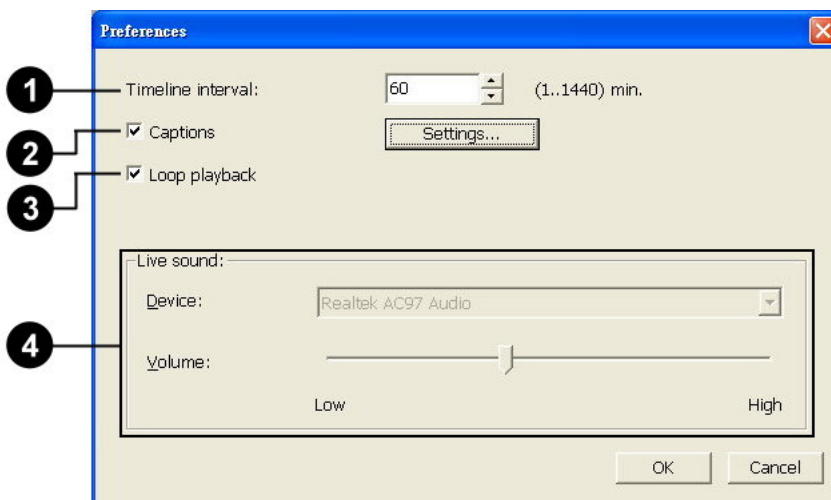
Whereas when playing events in split screen view, the event that is currently selected in the History list will be played back in the first split screen, and the events that follow it in the History list will be played simultaneously in the other split screens.

Clicking the Record Navigation buttons will allow you to move up or down the History list by multiples of 4, 9 or 16 records, depending on the number of split screens selected for event playback.

Setting display and audio playback preferences

When viewing recorded videos, you can choose to display information on-screen, enable quick display and loop the recorded video. Play the audio associated with the recorded video by setting the appropriate options.

Click  in silver scheme or  in black scheme, then on the pop-up menu, click Preferences to open the Preferences dialog box and customize these settings.



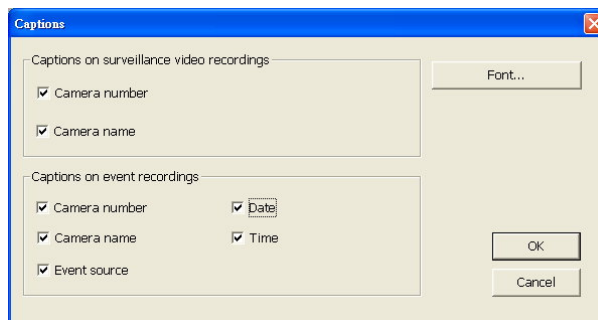
1 Timeline interval

This setting determines the interval of time segments (in minutes) that are displayed in the History list.

PS.: If you want to save AVI file which the time section is across a single timeline interval (eg: 9:30~10:20), you need to change the interval value to let the time section located within a single interval (eg: 180 min).

2 Captions

Select this option to show information on the split screens. Click the Settings button to open the Captions dialog box and select which information to display on the split screens. When displaying records by time segments, select the information checkboxes in the upper group box in the Captions dialog box. Whereas when displaying records by event, select the information checkboxes in the lower group box. Click the Font button to choose a font size and style for the displayed information.



3 Loop playback

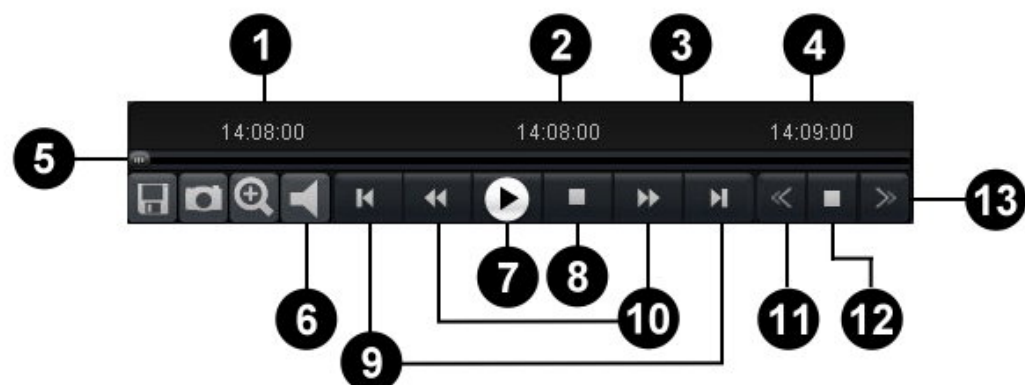
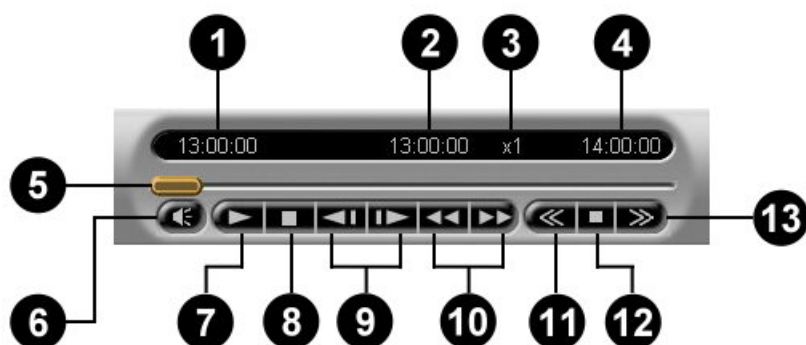
Select this option to continuously replay the recorded videos.

4 Live sound

Displays the audio device used by your computer to play back the audio of the recorded video. You can also adjust the playback device's volume here.

Navigation Panel

Use the Navigation Panel to control the playback of recorded video.





- | | |
|---------------------------|--|
| 1 Start Timecode | When playing records that were selected from the "All records" list, this shows the start time of the selected time segment.

When playing events, 00:00:00 will be shown as the "Start Timecode". |
| 2 Current Timecode | Shows the timecode of the current video scene. |
| 3 Playback Speed | Shows the current playback speed. |

- | | |
|--|---|
| <p>4 End Timecode</p> | <p>When playing records that were selected from the "All records" list, this shows the end time of the selected time segment.</p> <p>When playing events, the maximum time length between events will be shown as the "End Timecode".</p> |
| <p>5 Jog Bar</p> | <p>Allows you to jump directly to any part of the recorded video. Drag the slider tab to the desired part of the recorded video.</p> |
| <p>6 Mute</p> | <p>Toggles between playing/muting the audio associated with the recorded video.</p> |
| <p>7 Play / Pause</p> | <p>Plays/Pauses the playback at the current frame.</p> |
| <p>8 Stop</p> | <p>Terminates the playback and moves to the starting frame.</p> |
| <p>9 Previous / Next Frame</p> | <p>Moves to the previous/next video frame</p> |
| <p>10 Backward / Forward</p> | <p>Moves back/forward one or more video frames.</p> |
| <p>11 Decrease Playback Speed</p> | <p>Slows down video playback. Click once to play the recorded video at half (1/2 x) the normal speed. Click again to play the video at a quarter (1/4 x) of the normal speed. The slowest speed is 1/8 x.</p> |
| <p>12 Normal Playback Speed</p> | <p>Plays the recorded video at its original speed.</p> |
| <p>13 Increase Playback Speed</p> | <p>Increases the playback speed of the video. Click once to double (2 x) the playback speed. Click again to quadruple (4 x) the playback speed. The maximum speed is 128 x.</p> |



Zooming the video during playback

When playing recorded surveillance video in single view, you can zoom in or out of the video with ease. Click the  button in silver scheme or  button in black scheme to pop-up digital zoom panel. With this panel, you can zoom in/out the video, view in original size (single view only), fit in window or proportional fit, etc.

Detecting motion and suspicious objects on recorded video

When playing back recorded video from a selected camera, Motion Detection can be applied to the video. This allows you to instantly spot movements on video.

On the contrary, on a busy scene with lots of people and objects in motion such as in an airport or railway station, the Missing & Left Object Detection function can be applied. For instance, baggage that have been left on the scene for a long period of time will seem suspicious, and you can use this function to track them. You can also use this function to detect if an object has been moved out of the scene (such as a wall painting that has been stolen).

Click  in silver scheme or  in black scheme to open the Search Criteria Panel and choose whether to apply motion detection or missing & left object detection on a video recording. Follow the numbered sequence in the image below to specify how detection will be applied.






- 1 Record type From this drop-down list, choose whether to search for "All records", or to search for event recordings only such as Motion, Sensor, Manual, or Missing & left object detected events.
- 2 Camera list From this drop-down list, choose "All Cameras" if you want to see a list of video recordings from all the video cameras, or choose the Camera number of the desired video camera.


Note: Event Search is not available when "All Cameras" is selected.

- 3 Video recordings By default, the video recordings of the current date are displayed in the list. Click a video recording in the list to select it.

To access older video recordings, click  to open the Calendar then choose the desired date.

- 4 Detection type From the drop-down list, choose the type of detection to apply to the video recording. Select Motion detection or choose Missing & left object detection.

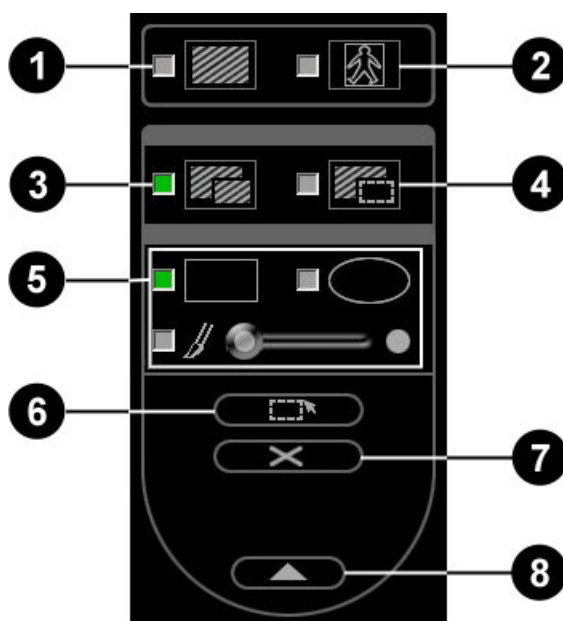
- 5** Open/Close Mask-drawing Panel

Click  to open the Mask-drawing Panel. This panel contains button controls which allow you to mask out areas that will be excluded from detection.
- 6** Profile Selection Panel


Use the controls in this panel to select, create, or modify a profile. See "Working with profiles" for more details.
- 7** Search controls


In a chosen video recording, you can limit the search for detected motion or static objects within a timecode range. Use this set of controls to control the search and how search results are displayed. See "Searching for detected motion or static objects in a video recording" for more details.









Masking out areas to exclude from detection



- 1** Show mask

 Select this option to display a mask (i.e., a shield) on the areas that will be excluded from detection.
- 2** Show tracking block

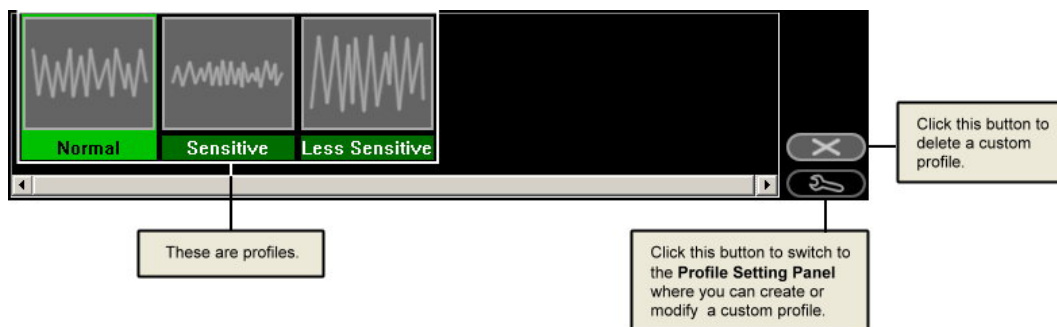
 Select this option to display a rectangular box on areas that have been detected with motion or with static objects.

- | | | | |
|----------|--------------------------|---|--|
| 3 | Add mask |  | Select this option to add a mask. Use the drawing tools to draw the mask. |
| 4 | Subtract mask |  | To add back parts from a masked-out area and include them during detection, select this option. Use the drawing tools to erase the mask. |
| 5 | Drawing tools | | Use one of the following drawing tools to draw masks: |
| | Rectangular mask |  | Select this tool to draw a rectangular-shaped mask. Drag your mouse over an area on the video to draw the mask. |
| | Elliptical mask |  | Select this tool to draw an elliptical -shaped mask. Drag your mouse over an area on the video to draw the mask. |
| | Draw by Brush |  | Select this tool to draw a freeform-shaped mask. Drag the slider to the right to have larger-size brush strokes, or drag to the left to have smaller- size strokes. To draw the mask, drag your mouse over an area on the video. |
| 6 | Mask All |  | Click this button to mask out the whole video and then switch to the Subtract-mask mode automatically. |
| 7 | Clear Masks |  | Click this button to erase all the masks and then switch to the Add-mask mode automatically. |
| 8 | Close Mask-drawing Panel |  | Click this button to close the Mask-drawing Panel. |

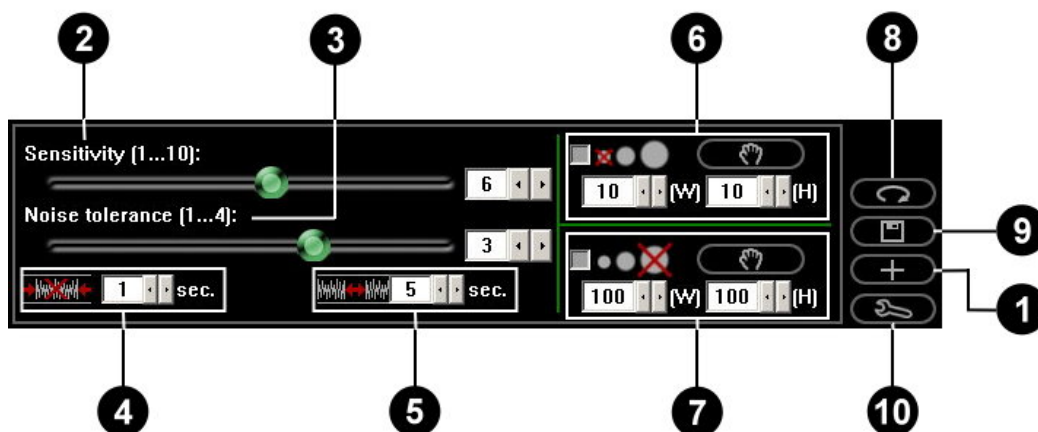
Working with profiles

A profile contains the motion detection or missing & left object detection settings. You can create your own profile or use the default profiles to apply to a video recording. The settings of your created profile can be modified; default profiles cannot be modified or deleted.

Profiles are listed in the Profile Selection Panel. To use the settings of a profile, simply click the desired profile.

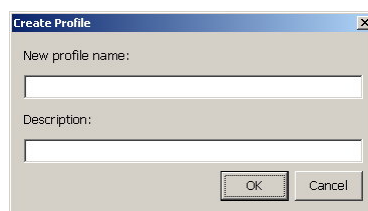


Motion detection settings



1 Create Profile

Click this button to add a new profile. When the Create New Profile dialog box opens, enter a profile name, then click OK.



2 Sensitivity

This setting determines the sensitivity to motion. Drag the slider to the right to increase the sensitivity level, or drag to the left to decrease the sensitivity level. Low sensitivity means that minimal motion will be ignored, and that only dramatic changes in movement will be detected. However, this may result in loss of event. High sensitivity means that even the smallest movement will be detected, but it could be a false event. Careful testing and fine tuning of the sensitivity setting is recommended.

3 Noise tolerance

Moving elements on the video whose pixel sizes are smaller than the specified noise tolerance level will be treated as video signal noise and will be ignored. This can reduce the occurrence of falsely detected motion caused by video signal noise in low illuminated environments.


4 Smallest event duration

Specify the minimum time duration for each detected motion. If the duration of a detected motion is shorter than the defined duration, it will not be treated as motion.


5 Event interval

Specify the minimum interval between motion events.

6 Ignore small moving object

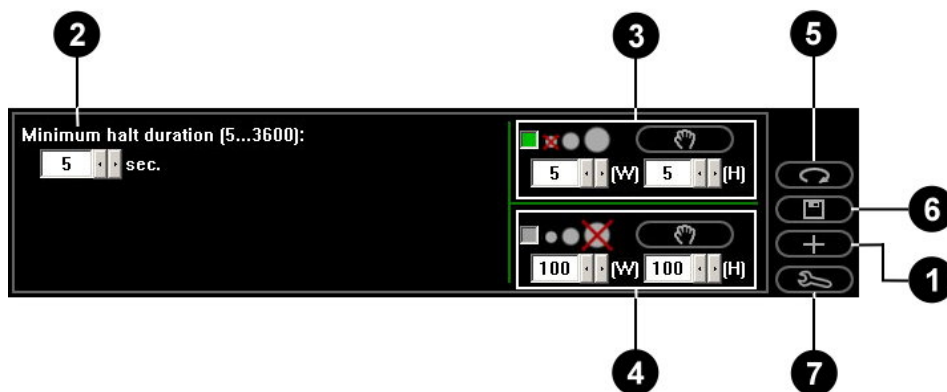
Select this option to filter out small objects (such as flashing stars in the sky or distant street lamps) whose dimensions are smaller than a specific size. To measure a small object to be used as the basis, click  then drag your mouse around that object. Its dimensions will then be entered in the width and height boxes.

7 Ignore large moving object

Select this option to filter out large moving objects (such as moving vehicles) whose dimensions are larger than a specific size. To measure a large object to be used as the basis, click  then drag your mouse around that object. Its dimensions will then be entered in the width and height boxes.

- | | | |
|-----------|------------------------------|---|
| 8 | Reset to Default | Click this button to change the settings back to the original (or previous) settings. |
| 9 | Save Settings | Click this button to save the modified profile settings. |
| 10 | Close Profile Settings Panel | Click this button to return to the Profile Selection Panel. |

Missing & left object detection settings





- | | | |
|----------|----------------|---|
| 1 | Create Profile | Click this button to add a new profile. When the Create New Profile dialog box opens, enter a profile name then click OK. |
|----------|----------------|---|



- | | | |
|----------|-----------------------|--|
| 2 | Minimum halt duration | Specify the minimum time duration when objects are expected to remain on its location. If an object remains on its location longer than the defined duration, it may be treated as a suspicious object. If an object is moved out of its location before the defined duration is over, it may be treated as a stolen object. |
|----------|-----------------------|--|

- 3** Ignore small object

Select this option to exclude small objects whose dimensions are smaller than a specific size. To measure a small object to be used as the basis, click  then drag your mouse around that object. Its dimensions will then be entered in the width and height boxes.
- 4** Ignore large object

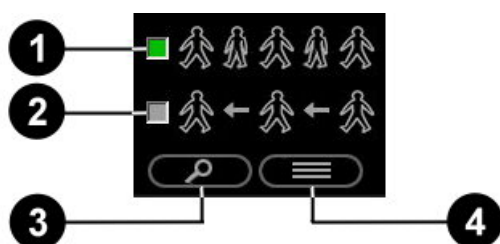
Select this option to exclude large objects whose dimensions are larger than a specific size. To measure a large object to be used as the basis, click  then drag your mouse around that object. Its dimensions will then be entered in the width and height boxes.
- 5** Reset to Default

Click this button to change the settings back to the original (or previous) settings.
- 6** Save Settings

Click this button to save the modified profile settings.
- 7** Close Profile Settings Panel

Click this button to return to the Profile Selection Panel.

Searching for detected motion or static objects in a video recording



- 1** Full search

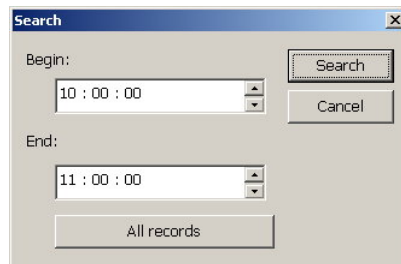
Select this option to apply detection on each video frame in a video recording.
- 2** Quick search

Select this option to advance forward through the video at intervals of 500 ms and apply detection only to the video frames that are at these intervals.

3 Search

Click this button to open the Search dialog box where you can limit the search within a range of timecodes. To limit the search, specify the desired range of timecodes for searching detected motion or static objects. Otherwise, click All Record to search through the entire video recording.

After you have entered the start and end timecodes, click the Search button in the dialog to begin the search. The Search Result Panel will then be displayed, listing the video sequences that are found to have motion or static objects.



4 View Search Results

Click this button to switch to the Search Results Panel.

Note: The timeline interval of records displayed in the Record List is an hour by default. If you want to search through records in higher intervals, for instance, in two-hour intervals, first open the Preferences dialog box then enter 120 minutes in the "Timeline interval" edit box.

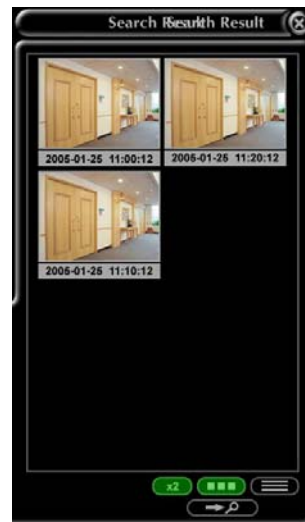
Search Results Panel



Display by List



Display by Thumbnail



Display two-column
Thumbnails



Click this button to display search results as a list of timecodes.



Click this button to display search results as a list of visual thumbnails.





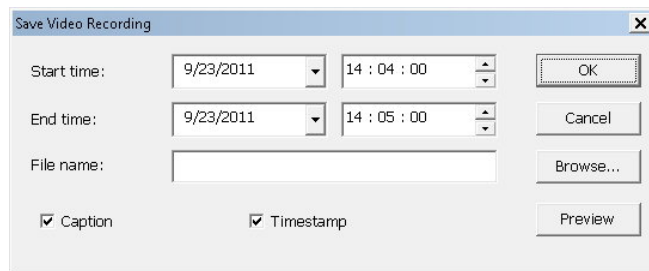
Click this button to expand the Search Results Panel and display more thumbnails by listing them in two columns.



Click this button to return to the Search Criteria Panel.

Saving video

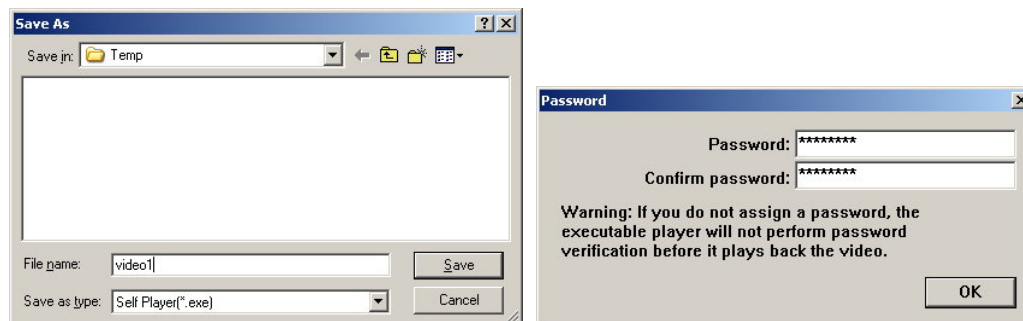
The whole or part of a recorded surveillance video can be saved as a video file. Click  button in silver scheme or  button in black scheme to open the following dialog box and specify the desired part of the video to save.



By default, the "Start time" and "End time" values are set to the actual start and end times of recording. To choose a portion from the recorded video, change the "Start time" and "End time" settings to the desired start and end timecodes.

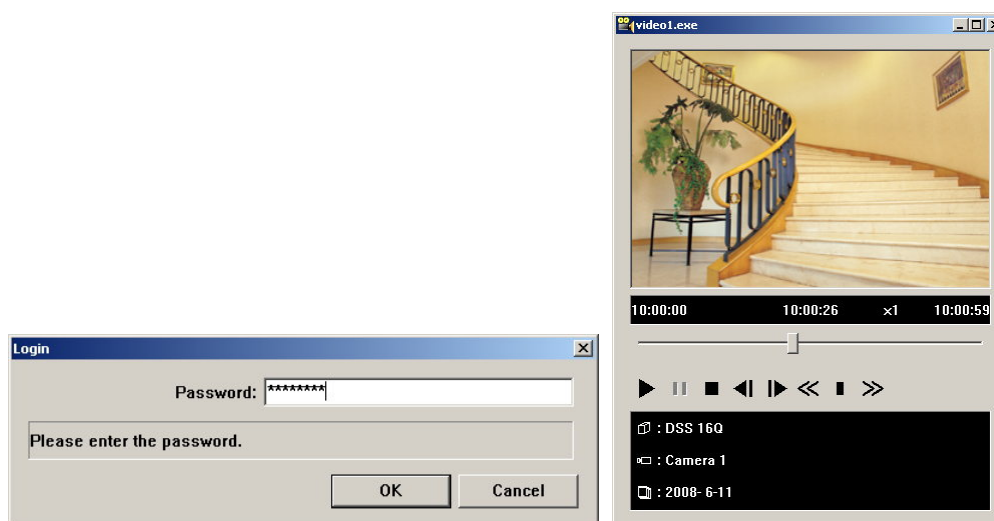
To check whether you have selected the appropriate part of the video, click the Preview button. After previewing, click Browse to open the Save As dialog box where you can choose to save the video in .AVI or .EXE format. After selecting the video file format, enter the file name and folder path where you want to save the video file then click Save. You will then be returned to the Save Video Recording dialog box. Click OK to confirm saving the video file.

If you chose to save the video as a self-executable (.EXE) file, you will be prompted to enter a password for the file.





Self-executable Player

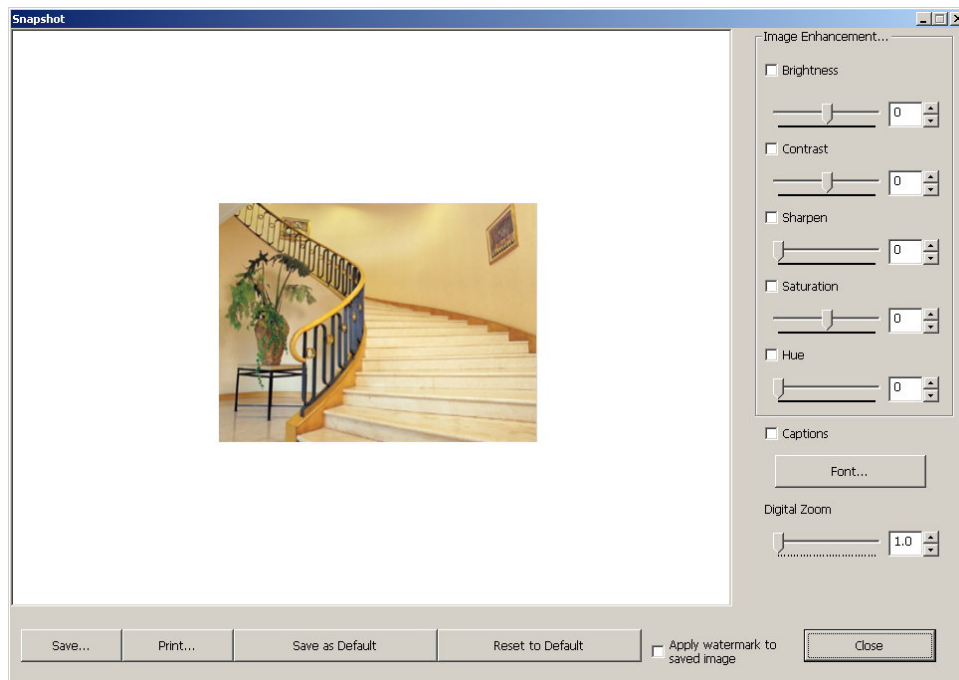
Saving the video as a self-executable (.EXE) file gives an added protection to the video content. A digital signature and a password will be embedded in the file. The user who receives the video file will be required to enter a password first before the video can be played. This ensures that the video is viewed only by the people you have authorized. Also, saving it in this format frees the user of having to use another video player to view the video. If password verification is not required, the video will automatically play when accessed.



Capturing image snapshots

If a video recording clearly shows suspicious activities or an intruder in the monitored site, you can notify police authorities and provide them with actual image snapshots. To take a snapshot, first play back the recorded video, and then click the  button in silver scheme or  button in black scheme. The Snapshot dialog box then opens, allowing you to enhance the captured image by adjusting brightness, contrast, sharpness, hue, and saturation. You can also choose to add captions on the captured image, enlarge the image by zooming, as well as print and save the captured image.

For added protection to the image, you can select the Apply watermark to saved image checkbox to embed a digital watermark.



Notes: When you click Print and you don't have a printer installed, it will prompt a message asking you if you want to install a printer first.

Click Save as Default to save the modified settings in this dialog box.

To change back to the original default settings, click Reset to Default.