

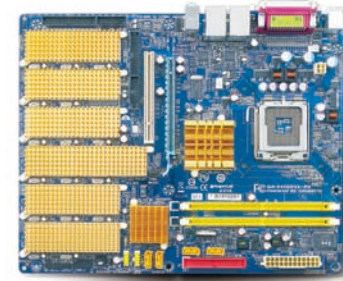
HuperLab in Brief

Huper Laboratories (known as HuperLab) is a leading developer of intelligence video surveillance systems, and a technology innovator on computer vision, video/audio codec and streaming technology. As a professional video surveillance solution provider, HuperLab has been devoted to researching and developing comprehensive, easy-to-use, and reliable surveillance products since 1997. So far, HuperLab has sold over 110,000 surveillance systems to clients in over 30 countries.

HuperLab offers a wide range of PC-based DVR systems, and the PTZ camera auto tracking system. huperVision 4000 series is the intelligent video surveillance system with powerful and smart DVR functions while huperDVR 2400 series is positioned as HuperLab's basic (entry-level) DVR system for general use. huperTracker, moreover, is an automated tracking system that engages multi-camera associated tracking by using one PTZ camera coupled with a maximum of three still cameras. Users can see the object details from different perspectives, and monitor its moving path with both PTZ and still cameras simultaneously. For details, please visit HuperLab's company website at www.huperlab.com



Specifications



■ HM6316

Server Board Specifications

Item	Description
CPU Support	Intel® Core™ 2 Duo/Pentium D/Pentium 4/Celeron D
Chipset	Intel® 945GC + ICH7R
FSB	1066/800 MHz
Memory Type	DDR2 667/800 (Dual Channel)
Max. Memory	2 GB
Memory Slot	DIMM*2
Expansion Slots	PCI-E 16X x 1 / PCI x 1
Video In	Max. 16CH Video Inputs (10 bit ADC)
Graphics	Intel® Integrated Graphic GMA 950
Storage Interface	IDE (Primary/Slave)*1 / S-ATA*4
LAN	Dual 10/100/1000 LAN (RTL8111*2)
Audio	AC97 (Realtek ALC655)
Internal I/O	USB2.0*2 / Front Audio*1 / COM*1
Rear I/O	USB2.0*4 / PS2*2 / LAN*2 / Audio*3 / COM*1 / Up to 16CH Video In (LTP Port)*1
Form Factor	ATX

Digital Video Specifications

Item	Description
Video Inputs	4-16
Audio Inputs	4-16
Video Resolution	720x480HD/720x576HD, 720x480/720x576, 720x240, 640x480HD, 640x480, 640x240, 320x240
Display Rate (NTSC/PAL)	480FPS/400FPS
Recording Rate (NTSC/PAL)	Up to 480FPS/400FPS*
GPIO	16
Watch Dog	Yes, hardware & software reset for anti-freeze protection

Product Models

Product Model	46304Q	46308Q	46316Q
Video Inputs	4	8	16
Audio Inputs	4	8	16
Display Rate (NTSC/PAL)	120FPS/100FPS (D1 resolution)	240FPS/200FPS (D1 resolution)	480FPS/400FPS (D1 resolution)
Recording Rate (NTSC/PAL)	120FPS/100FPS	240FPS/200FPS	480FPS/400FPS*
GPIO		16	
Surveillance Software	huperVision 4000 Intelligent Surveillance Software Suite (Please refer to huperVision 4000 product brochure for		

Accessories (Additional Purchase Options)

Item	Description
IOB-0805	An external I/O controller that connects to DVR RS-232 port to provide 8 digital input and 5 digital output ports.
IOB-1616	An external I/O controller that connects to DVR RS-232 port to provide 16 digital input and 16 digital output ports.
IOC-0404P	An I/O protection card that protects the GPIO of a video capture card. It connects to GPIO with attached cable, and provides 4 protection inputs plus 4 relay output ports. Plug into PCI slots to get required power.
LB-16	LB-16 Input Video Loop Through Card connects to HuperLab capture cards to loop back video signals. Camera video can go through the Video Loop-Back Card to the monitor set or to the quad processor for monitoring purpose or other special applications.
Quad-1602	HuperLab Quad-1602 card is equipped with two TV-out BNC connectors that provide a 16CH split view Quad display TV-out, and a programmable looping display for spot monitoring.
IP License Card	4404IP, 4408IP, 4416IP license cards provide 4CH, 8CH, and 16CH additional IP camera inputs that allow IP cameras connected to the surveillance system.

Note: *Recording rates may vary by system configurations



Huper Laboratories Co., Ltd.

Address: 10F, No. 577, Linsen N. Rd. Taipei 104, Taiwan
 Tel: +886-2-2599-4041 Fax: +886-2-2599-4161
<http://www.huperlab.com> E-mail: sales@huperlab.com

©huperVision is the trademark of Huper Laboratories, Co., Ltd. All other trademarks or registered trademarks are the properties of their respective holders. All product specifications are subject to change without prior notice.



huperVision 4000 DSS Server Board HM6316

All-in-one Server Board Exclusively
 Designed for Security Surveillance Use

Product Description

HuperLab DSS Server Board is an all-in-one server board designed exclusively for security surveillance use. Up to 16 real-time video capture chips are embedded seamlessly on the server board that guarantees easy installation, full system integration and improved compatibility. This unique DSS server board provides tailor-made recording speed function that allows installers to easily customize recording speeds from the software settings to fulfill various market demands, thus increases flexibility and saves stock costs. Bundled with huperVision 4000 software suite, the HuperLab DSS Server Board provides rich intelligent surveillance features, and enables the connections of CCTV and IP cameras to the newly-built or existing surveillance system.

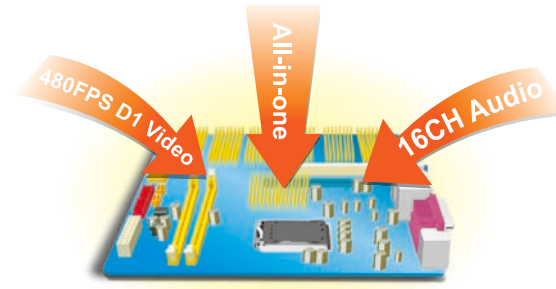
- Easy Installation & Improved Compatibility
- 16CH 480FPS/400FPS D1 Raw Data Capturing & Display
- H.264 High Quality Recording
- Tailor-made Video Recording Speed
- Hybrid DVR & IP Surveillance Ready
- DVR Optimizations to Lower Hardware Cost
- Intelligent Surveillance Software Suite
- Available Product Models: 46316 (16CH), 46308 (8CH) and 46304 (4CH)



Key Features

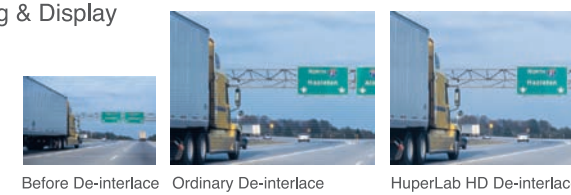
Easy Installation & Improved Compatibility

- All-in-one server board with up to 16CH real-time video & audio capturing functions
- Full integration of system board and capturing devices
- On-Board VGA capable of mainstream DVR display & recording specs
- PCI Express socket for additional Graphic Accelerator expansion
- Microsoft® XP Embedded ready to save software installation efforts



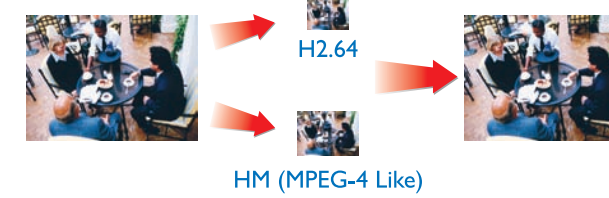
16CH 480FPS/400FPS D1 Raw Data Capturing & Display

- Provide up to 16CH 480FPS/400FPS D1 Raw Data Capturing & Display
- On-board 10bit ADC chips guarantee superior video quality
- Support up to 16CH audio inputs
- High Definition de-INTERFACE technology removes artifacts of moving objects, and keeps every fine detail of encoded video



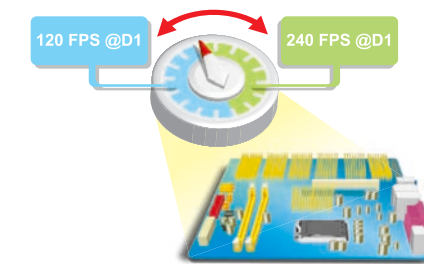
High Performance Video Compressions

- Provide H.264, HM (MPEG-4 like), and Motion-JPEG video compression formats
- HuperLab's proprietary video compression technology efficiently compresses video with extremely low CPU consumption, yet keeps its high quality



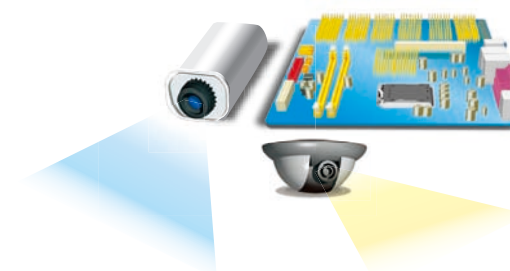
Tailor-made Video Recording Speeds

- Tailor-made recording speed function provides ease and flexibility to alter video recording speeds from the software settings
- Allow installers to easily customize their surveillance products to fulfill various market demands
- Provide the highest cost to performance per channel for video analytics in the industry



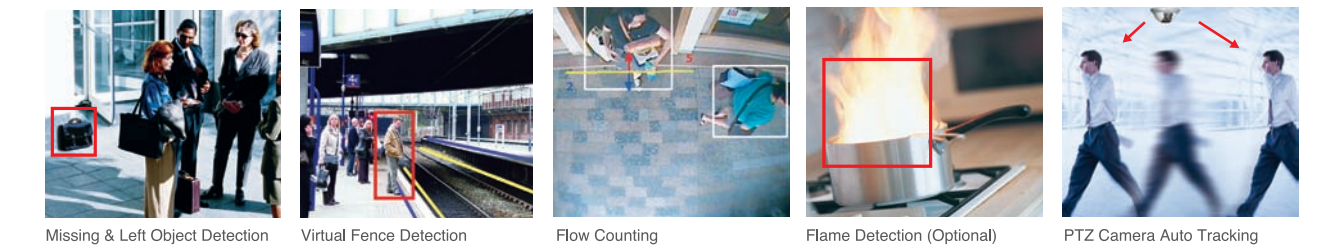
Exclusive Board Design for Surveillance Use

- Industrial level solid capacitor for longer operation lifetime
- Special heatsink design to lower working temperature of video capture chips (5~10°C lower than the average surveillance boards)
- Ferrite core design for low power loss
- Surge protection design prevents lightning strike on video/audio inputs
- On-board hardware watch dog for automatic system rebooting when DVR freezes



Intelligent Surveillance Software Suite

- Bundled with huperVision 4000 intelligent surveillance software suite, including missing & left object detection, virtual fence detection, flow counting, flame detection (optional), and smart search, etc.
- Remote surveillance and Central Management Solution Ready
- Support PTZ camera auto tracking



Hybrid DVR & IP Surveillance Ready

- Hybrid DVR functionality allows the connection of both analog and IP cameras to the newly-built or existing surveillance system
- Support a wide range of IP cameras, megapixel cameras, and video servers

DVR Optimizations

- HuperLab's unparalleled software design efficiently reduces CPU consumption on video content analysis and video compression
- Support Intel® Core™2 Duo Processors and Intel® next generation 45nm processors
- Support large HDD storage, including 10TB HDD and above

