

## huperDVR<sup>®</sup> 2400 v.2.0

### Specifications

Video Input	1~16 (NTSC or PAL)
Audio Input	1~8
Screen Display	Full Screen, 1, 4, 9, 16 Split-Screen Display, Loop Display
Resolution	NTSC: 320x240, 640x240, 640x480, 720x240 and 720x480 pixels (D1) PAL: 320x240, 640x240, 640x480, 720x288 and 720x576 pixels (D1)
Display/Recording Rate	30 fps/Per Camera (NTSC); 25 fps/Per Camera (PAL)
Video Compression Format	Motion-JPEG, HM (MPEG-4 like)
Language	English, Traditional Chinese, French, Germany, Italy, Polish, Portuguese, Slovak, Spanish and Turkish

### Product Features

Recording & Viewing	<ul style="list-style-type: none"><li>• Provide five recording modes: non-stop recording, non-stop smart recording, event recording, time-lapse recording and schedule recording</li><li>• Adjust brightness, contrast, saturation and hue for a clearer view</li><li>• Support digital zoom in to view specific areas</li></ul>
Playback & Search	<ul style="list-style-type: none"><li>• Playback 16 video/audio records simultaneously</li><li>• Fast forward up to 16x</li><li>• Digital zoom to snapshot photos with interpolation technology</li><li>• Search video records by camera, date, event types and time segment just in seconds</li></ul>
Detection	<ul style="list-style-type: none"><li>• Easily detect suspicious circumstances with motion detection, sensor detection and manual detection</li><li>• Motion detection can adjust tolerance level of noise, motion sensitivity, and filter targets by size</li></ul>
Event Notification	<ul style="list-style-type: none"><li>• Send event notifications by phone, email, fax, siren, and flash messages</li><li>• Trigger events in a full screen display</li><li>• Attach event snapshots with email notifications</li><li>• Notify video loss</li><li>• Automatically generate event reports emailed on a daily, weekly or monthly basis</li></ul>
E-Map	<ul style="list-style-type: none"><li>• Provide the electronic map that lays out the locations of video cameras, sensor and alarm devices</li></ul>
Task Scheduling	<ul style="list-style-type: none"><li>• Perform task scheduling for recording, event detection and event notification</li></ul>
PTZ Camera Control	<ul style="list-style-type: none"><li>• Support major brands of PTZ cameras</li><li>• Provide advanced PTZ camera control functions, such as iris control, pan/tilt speed adjustment, auto-loop/auto-pan, and PTZ control over a joystick/keyboard</li></ul>
Remote Control	<ul style="list-style-type: none"><li>• Support remote viewing via standard web browsers, PDA (WinCE) and mobile phones</li><li>• Support remote viewing, recording, playback, DVR setup and video records retrieve</li><li>• Support remote PTZ camera control</li><li>• Support remote records playback with/without downloading</li><li>• Retrieve the camera live sound over the Internet</li><li>• Real-time, two-way voice communication b/w DVR servers and clients</li></ul>
Device Control	<ul style="list-style-type: none"><li>• Support I/O devices up to 16 sensor inputs and 16 relay outputs</li></ul>
Dynamic IP Support	<ul style="list-style-type: none"><li>• View web cam pages at the Dynamic IP server</li></ul>
Backup & Video Export	<ul style="list-style-type: none"><li>• Backup video records manually or by schedule</li><li>• Support the backing up of single camera records</li><li>• Directly backup recording files to CD</li><li>• Snap a video frame to an image file or print it out</li><li>• Export video records to an AVI file or a self-executable file (.exe). The self-executable file is embedded with digital authentication and password protection</li></ul>
Access Control & Stability	<ul style="list-style-type: none"><li>• 4 levels of access control by cameras and by authorities</li><li>• SmartFile Management Technology avoids disk fragmentation and increase system stability</li><li>• Provide hardware watchdog for system recovery</li></ul>
Storage Capacity	<ul style="list-style-type: none"><li>• Support multiple storage locations</li></ul>
Wide Dynamic Vision Pack (Optional)	<ul style="list-style-type: none"><li>• Increase video visibility in a low illumination or backlit environment with visibility enhancement</li><li>• Sharpen the blurred text or image with sharpness adjustment</li><li>• Eliminate camera video noises and reduce data size up to 50% with noise reduction</li><li>• Reduce false alarm with size filtering</li></ul>

Note: 1. Full D1 support is available in huperDVR 2400 v. 2.0.  
2. Huper Laboratories is continuously in research and development and therefore reserves the right to alter specifications without prior notices.

**huperLab**

**Huper Laboratories Co., Ltd.**

10F, No. 577, Linsen N. Rd. Taipei 104, Taiwan

TEL: +886-2-2599-4041 • FAX: +886-2-2599-4161 • E-mail: sales@huperlab.com • http://www.huperlab.com

# Networking Vision Compression

## huperDVR<sup>®</sup> 2400

Video & Audio Surveillance System



**huperLab** Leading Compression, Vision and Networking Technologies

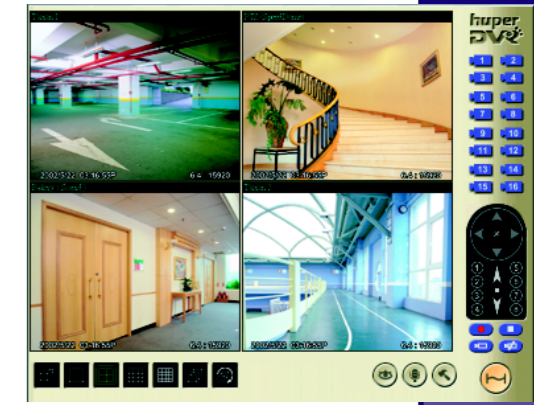
# huperLab



▲ Site Server



▲ Record Player



▲ Web-based Remote Viewer

Leading Compression, Vision and Networking Technologies

# huperDVR 2400 Video & Audio Surveillance System

## Snapshot & Video Export

Adjust image quality or zoom in for details, and **snapshot** a video frame for archiving or printing. You can also **export video clips** to AVI or self-executable files with digital authentication and password protection.

## Dynamic IP Support

Don't worry about huperDVR changing its IP address. You can easily view its web cam pages by site name at the Dynamic IP Server.

## Two-Way Voice Communication

Real-time voice transmission between huperDVR sites and clients is proceeding simultaneously in full duplex. You can talk to security personnel at any DVR site for event handling.

## Mobile Surveillance

huperDVR 2400 lets you remotely monitor any DVR site via your handheld devices, such as **PDA** and **mobile phone**.

## Support High Performance PCI Express DVR Cards **NEW**

huperLab's PCI Express DVR card series is a new generation DVR card solution which provides high performance and excellent video quality on display and recording. The PCI Express interface has become an industry standard for computing platforms, and been supported by Intel 9xx series chips. It offers higher data transfer rates and greater bandwidth than traditional PCI bus. huperLab's PCI Express DVR card solutions guarantee you a reliable and high performance DVR system with excellent video quality on display and recording.

## Prompt Event Notifications

huperDVR 2400 instantly sends out notifications when motions or sensor inputs are detected. Notifications can be sent in many different ways:

- Notify by phone call, email, fax, alarm sound, flash message or full screen pop-up of event video
- Trigger traditional alarm devices
- Display the event camera in full screen
- Send event reports on a daily, weekly or monthly basis
- Send event video to huperCenter\* for central alarm management **NEW**

\* huperCenter is huperLab's central management system (optional in huperDVR 2400).

## Powerful Central Monitoring

**huperRemote** enables you to view and receive live audio from up to 64 cameras, and remotely control PTZ cameras. **Tree-structured DVR site interface** lets you easily identify and manage up to 1,000 DVR sites. Multiple DVR sites or cameras can be grouped together for one click fast connection.

## Full D1 Resolution Support **NEW**

huperDVR 2400 ensures superior video quality with full D1 resolution support (NTSC: 720x480, PAL: 720x576). Taking advantages of huperLab's proprietary HM (MPEG-4 like) compression technology, the video is optimally compressed yet retains the best quality.

## Advanced Motion Detection

Advanced Motion Detection automatically detects and tracks a moving object with a frame indicator. It reduces false alarms caused by weather or lighting changes, camera noises, camera shakes, and constant cruise of PTZ camera. **Sensitivity level** and **noise tolerance** are adjustable to filter environment interference outdoors. Unique **Size Filtering** allows you to filter unnecessary moving objects by defining the size of targets.

## Complete Integration

Sensors, alarms, and PTZ devices can be integrated into huperDVR 2400. Through the RS232/ RS485 converter, PTZ cameras can be remotely controlled for pan/tilt/zoom. Via the PCI-I/O card or external I/O box, huperDVR receives signals from sensors and triggers external devices such as lights, switches, gates, and other traditional alarm devices. huperLab's external I/O box supports 16 inputs and 16 relay outputs.

## Wide Dynamic Vision Pack (Optional)

Wide Dynamic Vision Pack provides powerful features on video quality enhancements, noise reduction, and false alarm prevention. Dark or unclear images from a video source can be enhanced impressively for viewing and recording. Powerful mask function is used to enhance only specified region of interests.



▲ Event Viewer



▲ Remote Viewer on PDA



▲ Remote Viewer on Mobile Phone

# DVR