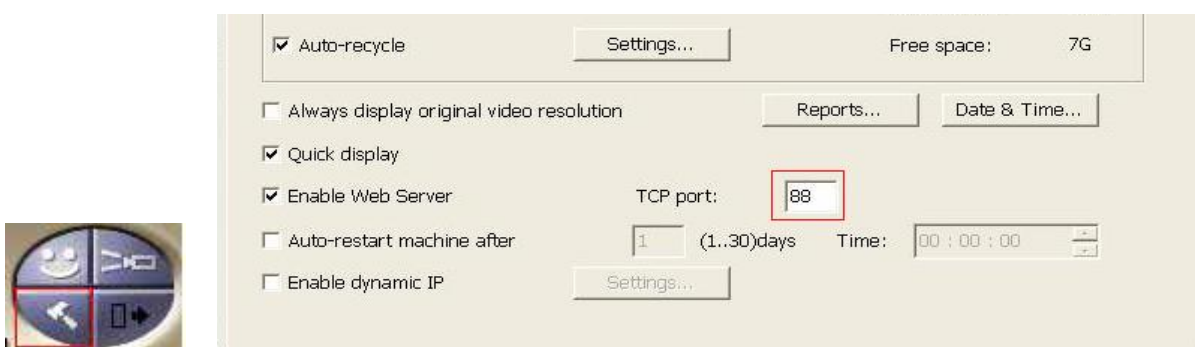


## How to use uPnP on Router to auto open port

1. First ,it must have a router that support the uPnP function.
2. Because it is not release , so must change file now.
3. The following is renew file's steps:
  - A. Please close the DVR Site Server.
  - B. Extract the file “uPnP.zip” ,it have the two file “dll2.dll” and “libNAT.dll” ,please overwrite on C:\Program Files\huperLab\huperDVR 2400\Bin (If the version is 4000 series ,please over write on C:\Program Files\huperLab\huperVision\Bin.
  - C. Start the DVR Site Server.
4. After start the Site Server ,then it will show the green block on the tool bar , you can see the actual IP(ex.211.23.2.69)、 open web port(ex.88) and video access port (ex.18087).



5. Suggest TCP port change to other port ,because the uPnP is automate device ,when default port 80 is used by other pc ,the uPnP will assign not used port ,but it is inconvenient that the port is dynamic port ,so suggest set a fixed port on DVR Site Server.



6. If router have support ,but the DVR have not work like number 4 ,please go to router's settings page to check the uPnP function is enabled. Maybe the route never work ,the function is hang ,so restart the router ,then restart DVR Site ,let the uPnP function rework.